

**SUBJECT:** STERLING LST VERSION 8.2.441

**DATE:** 8/9/2018

The New Sterling LST Version 8.2.441 is now available for download.

## How do I download the version?

Visit our website or download the 64 bit version of Lightspeed here:

[https://download.lightspeed.com/SterlingLST\\_x64\\_8.2.441.0.msi](https://download.lightspeed.com/SterlingLST_x64_8.2.441.0.msi)

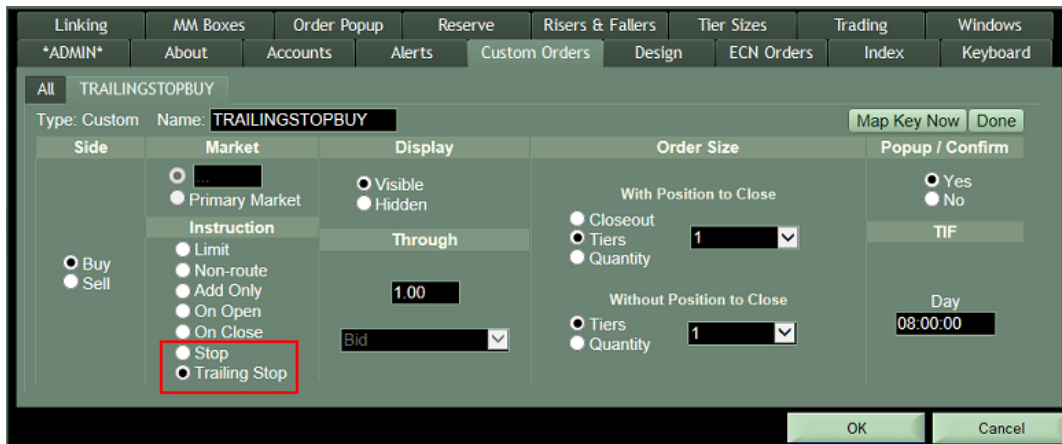
## What changes should I look for?

### New Custom Order and Route Options

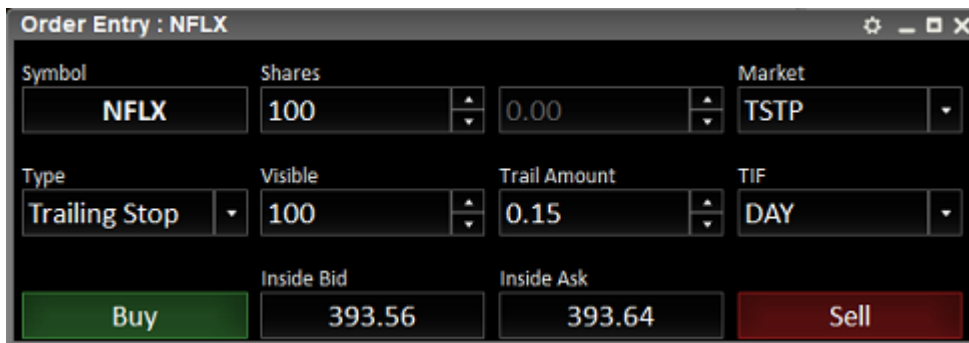
#### 1) Send Stops and Trailing Stops

Select Stop or Trailing Stop instruction on the Custom Order or Custom Routes dialogue. These orders will be managed outside of LST, users may Log out and keep orders active.

Note: The previously used “Custom Stops” triggered by Lightspeed are no longer available

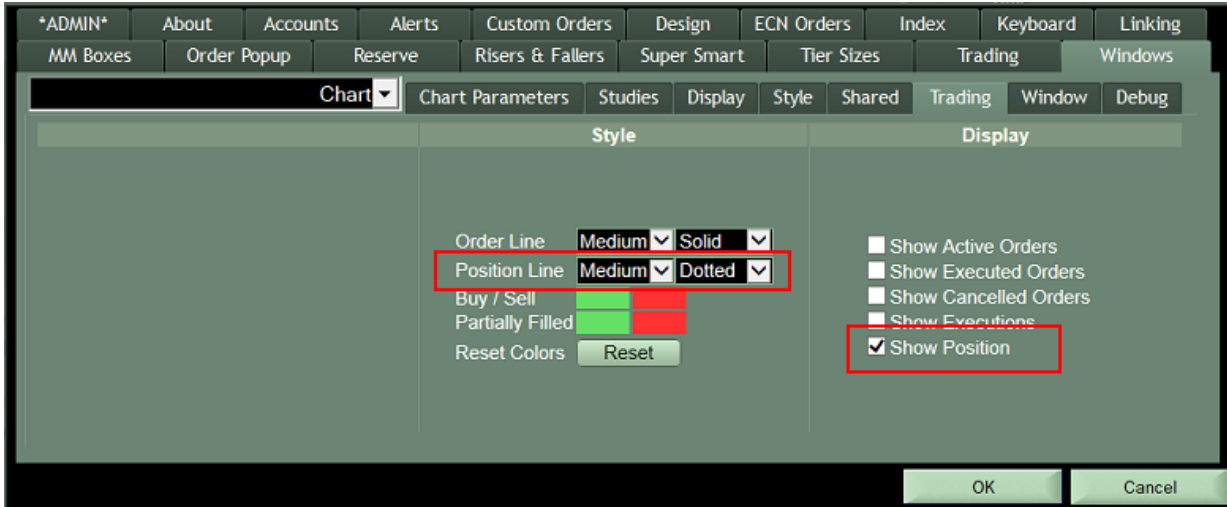


Trailing stops also now available in your Order Entry Window:



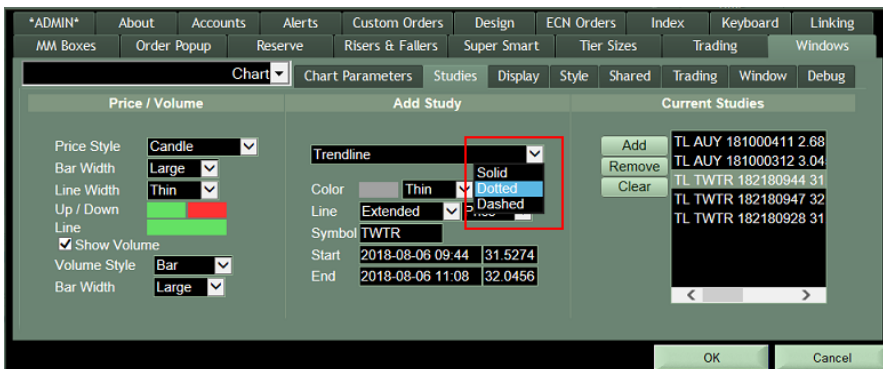
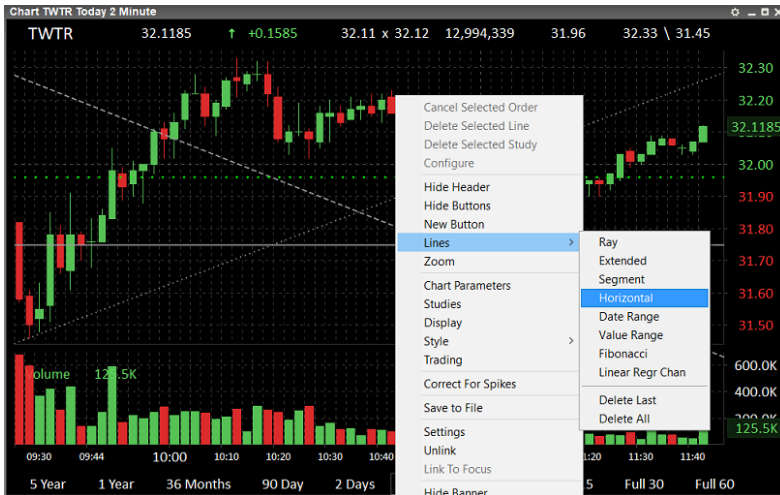
**2) New Chart Functionality:**

- a. Add a line displaying your Position in the chart:** Select the option to Show Position, select from the display choices.



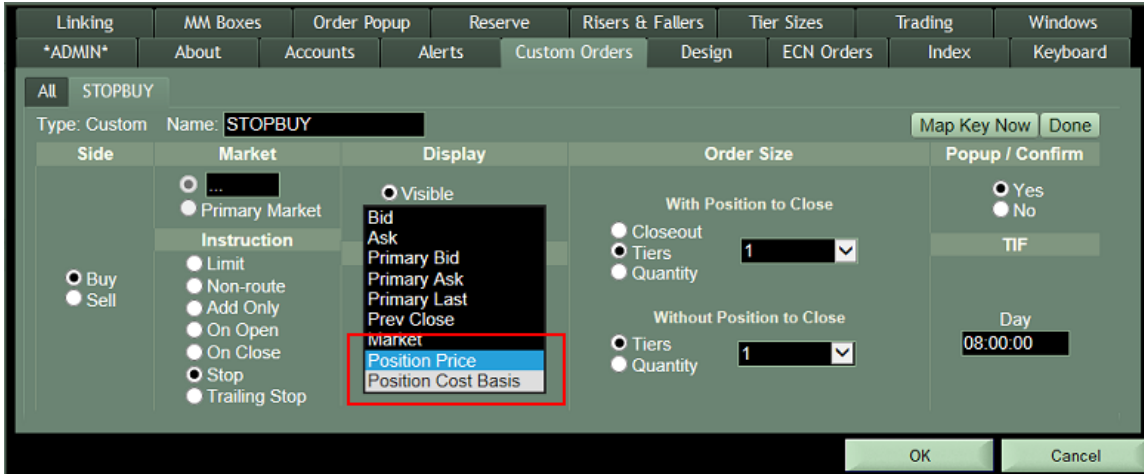
- b. Add Horizontal Lines easily:** Right click and select “Horizontal” from the Line drawing choices

- c. Use Dotted or Dashed Lines:** Change the line type to Dotted or Dashed in the Study configuration.



### 3) Send Custom orders based on your Position (Marked Price or Cost Basis Price)

Select from the reference price dropdown and choose Position Price or Position Cost Basis, seen here:

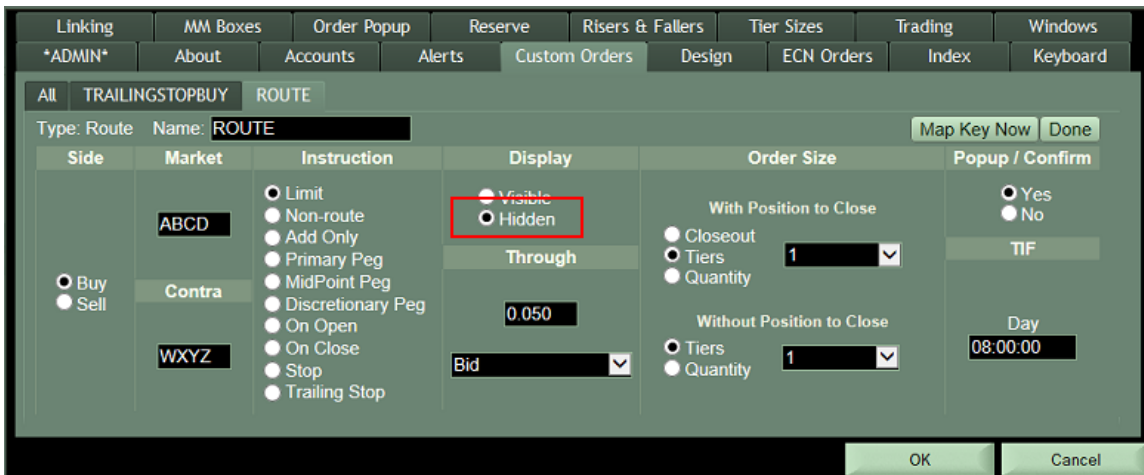


The screenshot shows the 'Custom Orders' dialog box. The 'Display' dropdown menu is open, showing options: Bid, Ask, Primary Bid, Primary Ask, Primary Last, Prev Close, Market, Position Price, and Position Cost Basis. 'Position Price' and 'Position Cost Basis' are highlighted with a red box. Other fields include 'Side' (Buy/Sell), 'Market' (Primary Market), 'Instruction' (Limit, Non-route, Add Only, On Open, On Close, Stop, Trailing Stop), 'Order Size' (With/Without Position to Close, Tiers, Quantity), and 'Popup / Confirm' (Yes/No, TIF, Day).

### 4) Send Hidden Instruction on Custom Orders or Routes

Users can now mark any custom orders hidden.

Note: Be sure the destination can support your Hidden Instruction.



The screenshot shows the 'Custom Orders' dialog box for a 'ROUTE' order. The 'Display' dropdown menu is open, showing options: Visible and Hidden. 'Hidden' is highlighted with a red box. Other fields include 'Side' (Buy/Sell), 'Market' (ABCD, Contra, WXYZ), 'Instruction' (Limit, Non-route, Add Only, Primary Peg, MidPoint Peg, Discretionary Peg, On Open, On Close, Stop, Trailing Stop), 'Order Size' (With/Without Position to Close, Tiers, Quantity), and 'Popup / Confirm' (Yes/No, TIF, Day).