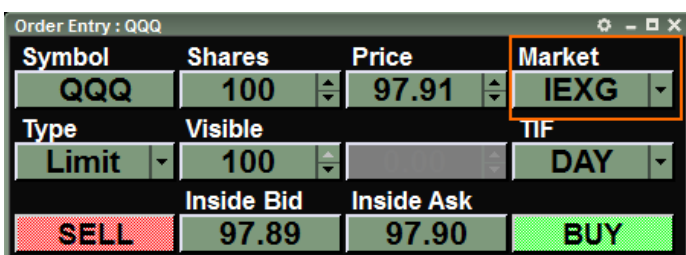


TO: LIGHTSPEED TRADING CUSTOMERS/TRADERS
SUBJECT: LIGHTSPEED TRADER NOW OFFERS DIRECT ROUTING TO IEX
DATE: 10/30/2014

Lightspeed Trader now offers direct access to **IEX**. Click the below link for information on IEX:
<http://www.iextrading.com/services/>

How do I send an order?

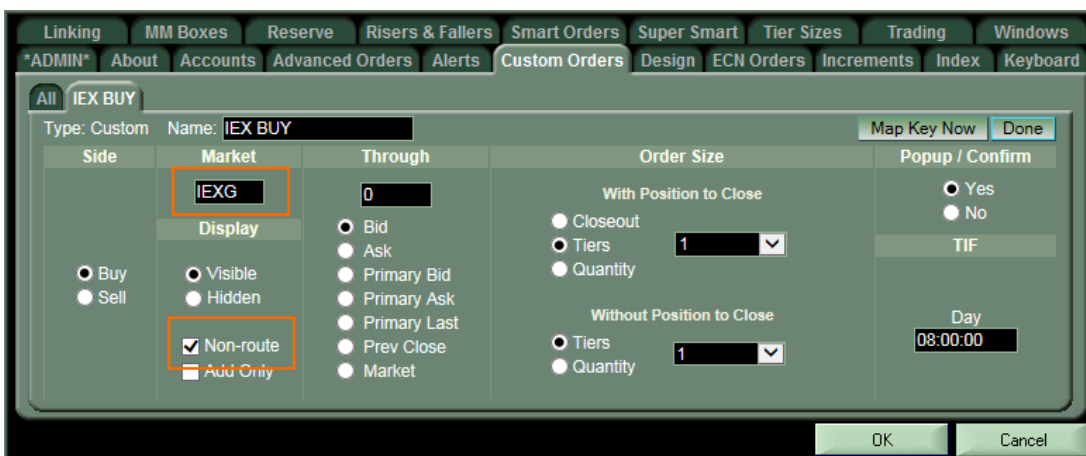
IEX is available in the **Market Dropdown** of your Order Entry Window, by selecting **IEXG**:



To send an order with your keyboard or hotbutton, create a basic custom key with **IEXG** as the Market or add IEXG to your Scroll list in the Lightspeed Trader Increments Tab.

What kind of orders are accepted?

By default, limit and market orders to IEX are now routable. To send orders to the IEX book-only, you must create a custom order and select Non-Routable or select Non-Routable from the Type dropdown of your Order Entry Window.



What are the hours of operation?

Trading on IEX will commence at 9:30am ET and end at 4pm ET.

What is the cost of the IEX Route?

For pricing please refer to our online pricing table at <http://www.lightspeed.com/pricing/routing-fees/>