



member FINRA, SIPC

TO: LIGHTSPEED TRADING CUSTOMERS/TRADERS
FROM: OPERATIONS GROUP
SUBJECT: LIGHTSPEED VPN CONNECTIVITY
DATE: 1/30/2012

Thank you for choosing Lightspeed Trader!

This Memo will guide you through the VPN and Software Installation for first time users to begin trading on Lightspeed Trader. Please carefully follow this step by step guide:

- 1) To begin, please login to the <http://www.lightspeed.com/> website using the credentials provided to you:

Select Log In and it will take you to the page seen right. Enter your credentials.

Please note that the password entry is case sensitive.

The screenshot shows a 'Log In' form with the following elements:

- Log In** (Section Header)
- Text: "Lightspeed customers, please enter your username and password below. If you are returning to complete an application for a Lightspeed Account, please [click here](#)."
- USERNAME** label above a text input field containing "VPNGUY".
- PASSWORD** label above an empty text input field.
- LOG ON** button.

- 2) Once you are logged in, click "**Downloads**" from the choices on the left of the page, then select "**Trader Software.**"

My Account

Account Settings

Threshold Rates

Locate Required Overnight Rates

Easy To Borrow

Non-Marginable

Downloads

Account Forms

Trader Software and Documentation

Customer Support

- 3) This will take you to the screen seen below. Select which **Lightspeed Trader Install**, 32 or 64-bit in order to install the Lightspeed Trader software.
Note: If you are unsure if your computer supports 64-bit, always select 32-bit.

Trader Software

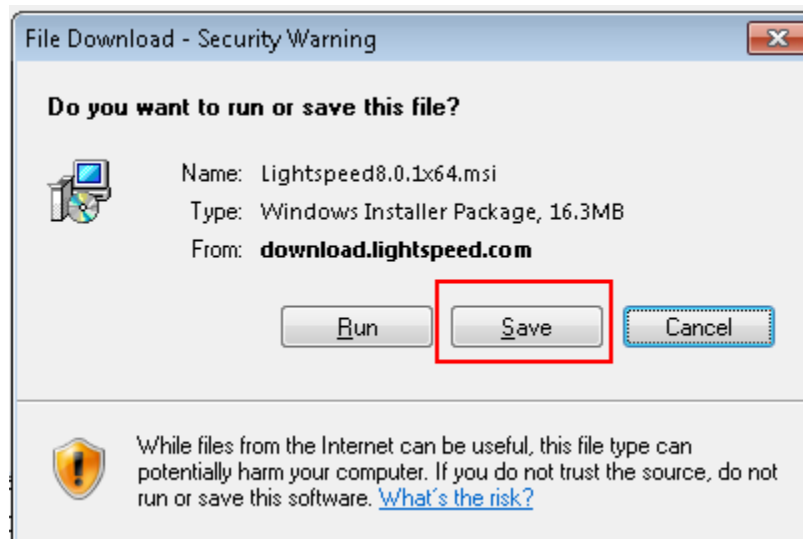
[Lightspeed Installation Guide](#)

[Lightspeed Trader Install \(32-bit\)](#)
[Lightspeed Trader Install \(64-bit\)](#)

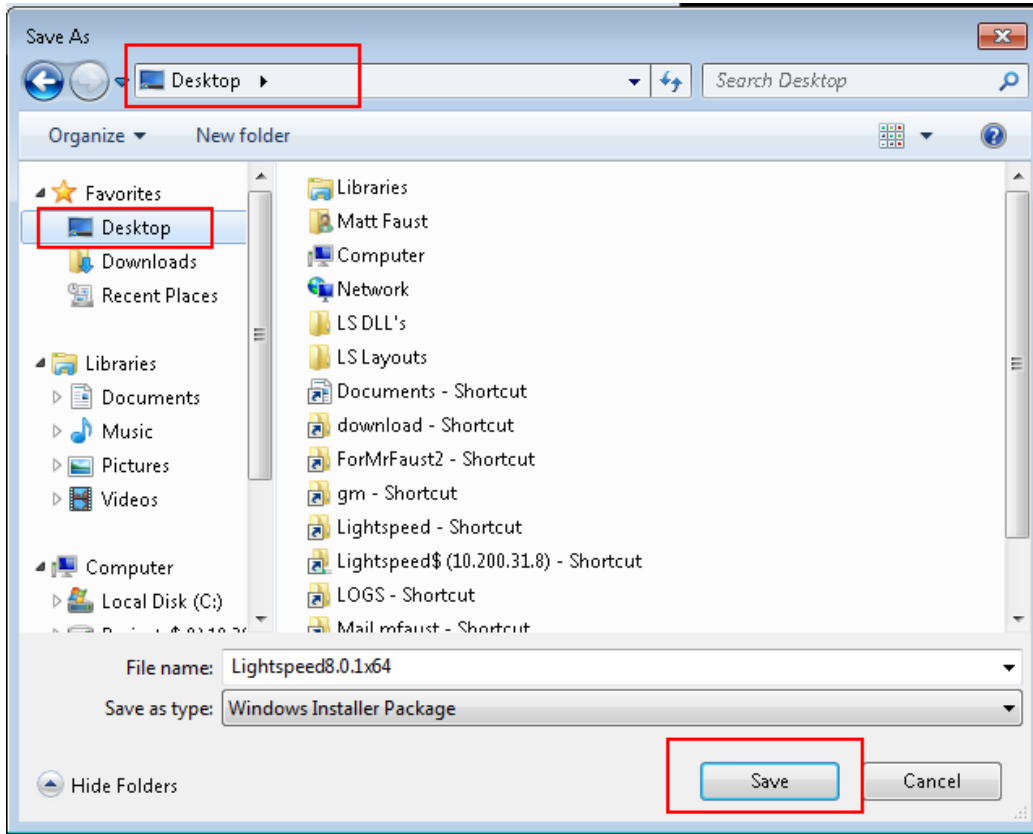
*If you are unsure if your Operating System supports 64-bit programs, install the 32-bit version of Lightspeed Trader.
**VPN Users upgrading to 64-bit version of Lightspeed Trader must also upgrade their VPN Software below

[Latest Version Release Notes](#)

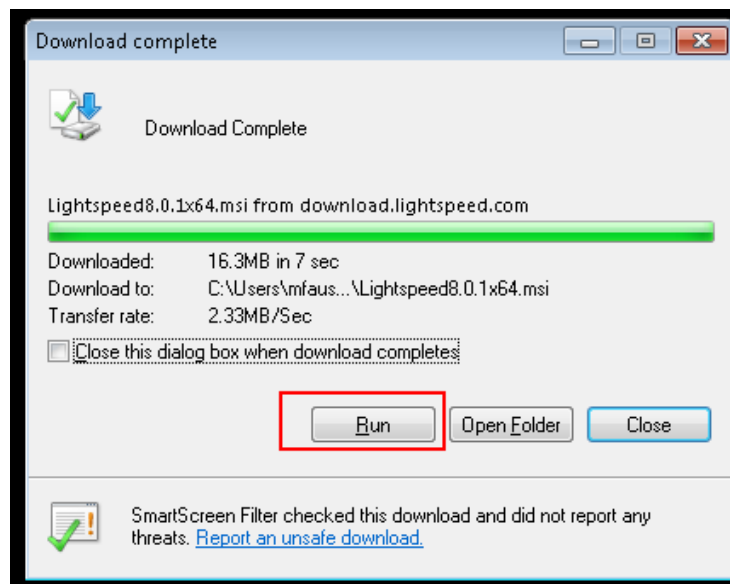
- 4) The following screen should appear, confirming that you would like to download the Lightspeed software. Please select **Save** to Save the Lightspeed Install to your computer.



- 5) Windows will ask you where you would like to Save the Lightspeed Install. Select **Desktop** from the dropdown and click **Save**.



- 6) Once the download is complete, you will see a Download Complete confirmation. Click **Run** as seen below:



- 7) When you have finished installing the Lightspeed install, select Finish, and return to the Lightspeed Trading Trader Software Page to install the VPN Software. Click “**Download VPN Connection Software (Save to Desktop).**”

Trader Software

[Lightspeed Installation Guide](#)

[Lightspeed Trader Install \(32-bit\)](#)

[Lightspeed Trader Install \(64-bit\)](#)

*If you are unsure if your Operating System supports 64-bit programs, install the 32-bit version of Lightspeed Trader.

**VPN Users upgrading to 64-bit version of Lightspeed Trader must also upgrade their VPN Software below

[Latest Version Release Notes](#)

Technology Requirements

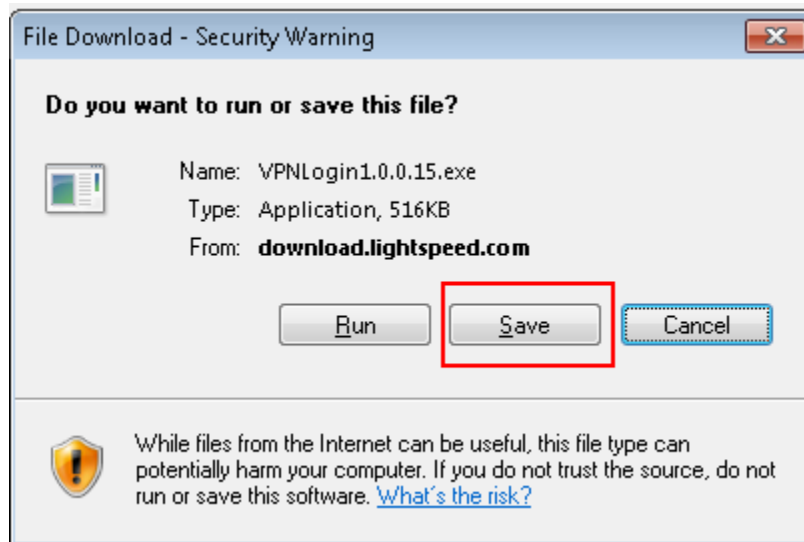
In order to obtain maximum performance with the Lightspeed Trading Platform, we recommend the following minimum specifications:

- Processor: 2 GHz or higher (dual core or better)
- Memory: 2 GB of RAM
- Operating System: Windows XP or later
- Resolution: 1024 x 768
- Hard Drive: 300MB free space
- Cable Modem or DSL with atleast 5 Mbps download speed and at least 1 Mbps upload speed

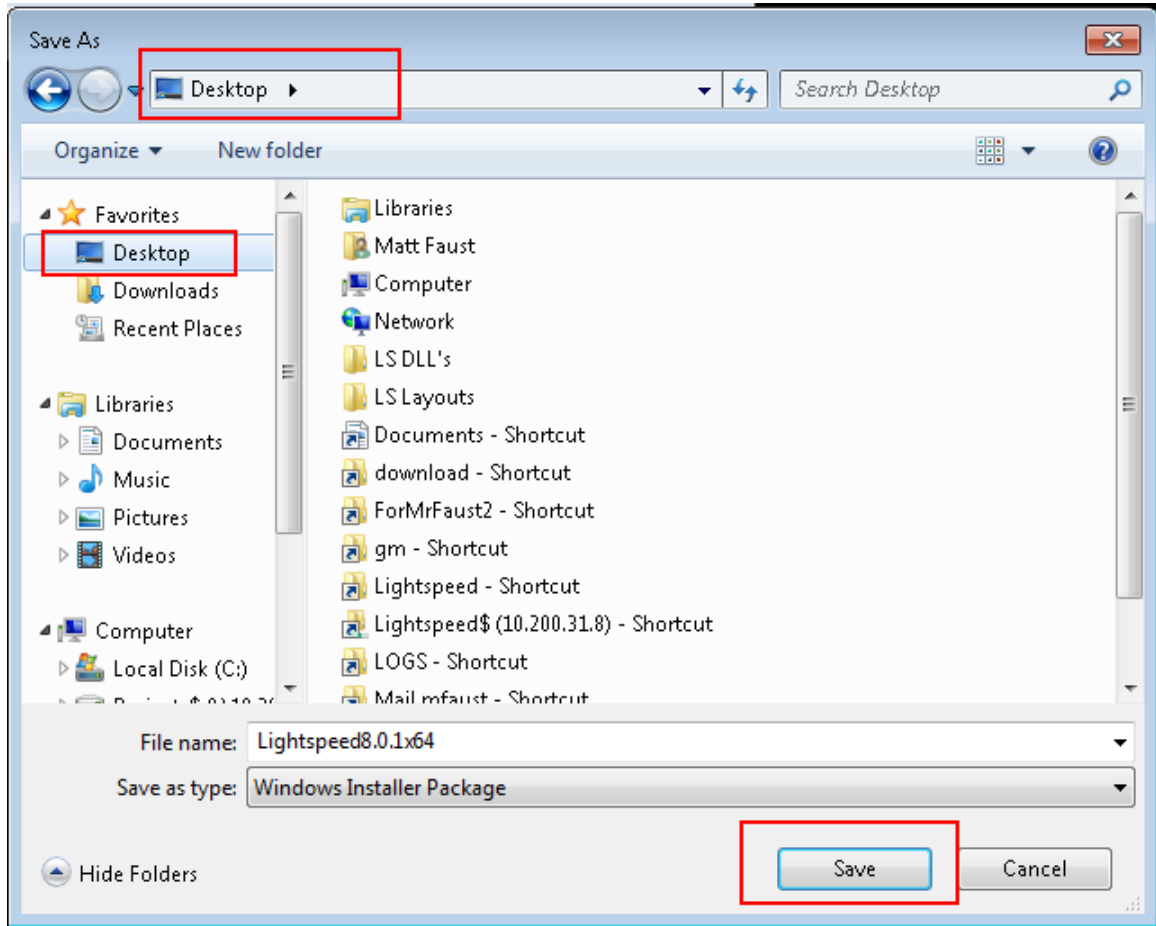
Manuals, Documentation, and Tools

- [Download VPN Connection Software \(Save to Desktop\) \(Supports 32 and 64-bit\)](#)
- [Lightspeed Manual](#)

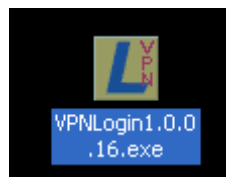
- 8) You must also **Save** this application to your Desktop, as you did with the Lightspeed Software Installation.



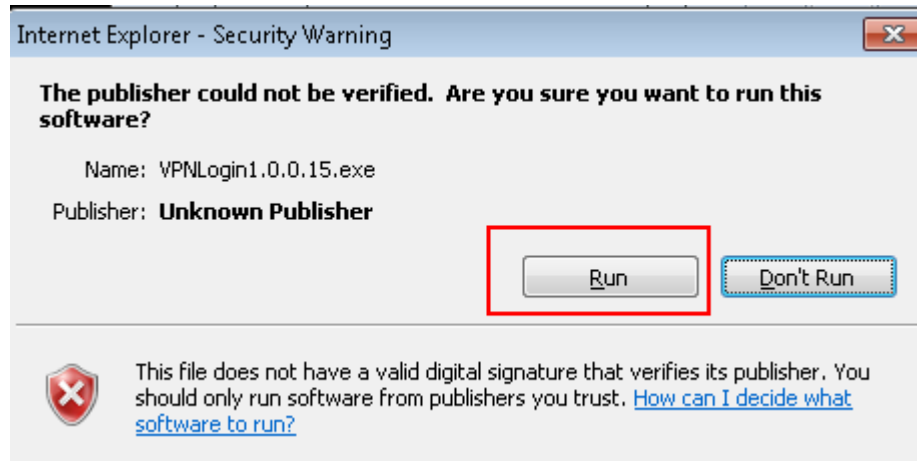
9) The following windows screen will appear, select **Desktop** as the destination and click **Save**:



10) Once the download is complete, click **Close** and proceed to your Desktop to log in to Lightspeed. You will now see the Lightspeed VPN Icon on your desktop. **To connect to Lightspeed, please double-click the icon shown below to connect to our VPN network.**



11) If you are prompted to trust the software by the Unknown Publisher, click **Run**:



12) The Lightspeed login box shown below will now appear. Please enter the credentials provided and hit Enter or click on **Login**. This will automatically launch the Lightspeed trading platform. (Please note this may take a few seconds to launch.)



If you experience any problems during the download process, please contact the Lightspeed Tech Support Group for immediate assistance at (888) 577-3123 (LSPD123) Option 4.