



member FINRA, SIPC

TO: LIGHTSPEED TRADING CUSTOMERS/TRADERS
FROM: OPERATIONS GROUP
SUBJECT: LIGHTSPEED SSL CONNECTIVITY
DATE: 1/30/2012

Thank you for choosing Lightspeed Trader!

This Memo will guide you through the SSL Software Installation for first time users to begin trading on Lightspeed. Please carefully follow this step by step guide:

- 1) You must first be setup by Lightspeed Operations to access SSL. If you are unsure about your setup, contact the Lightspeed Operations Team at 1 (888) LSPD-123, Option 2.
- 2) To begin, please login to the <http://www.lightspeed.com/> website using the credentials provided to you:

Select Log In and it will take you to the page seen right. Enter your credentials.

Please note that the password entry is case sensitive.

Log In

Lightspeed customers, please enter your username and password below. If you are returning to complete an application for a Lightspeed Account, please [click here](#).

USERNAME	PASSWORD
<input type="text" value="VPNGUY"/>	<input type="password"/>
<input type="button" value="LOG ON"/>	

- 3) Once you are logged in, click “**Downloads**” from the choices on the left of the page, then select “**Trader Software.**”

My Account

Account Settings

Threshold Rates

Locate Required Overnight Rates

Easy To Borrow

Non-Marginable

Downloads

Account Forms

Trader Software and Documentation

Customer Support

- 4) This will take you to the screen seen below. Select which **Lightspeed Trader Install**, 32 or 64-bit in order to install the Lightspeed Trader software.

Note: If you are unsure if your computer supports 64-bit, always select 32-bit.

Trader Software

[Lightspeed Installation Guide](#)

[Lightspeed Trader Install \(32-bit\)](#)

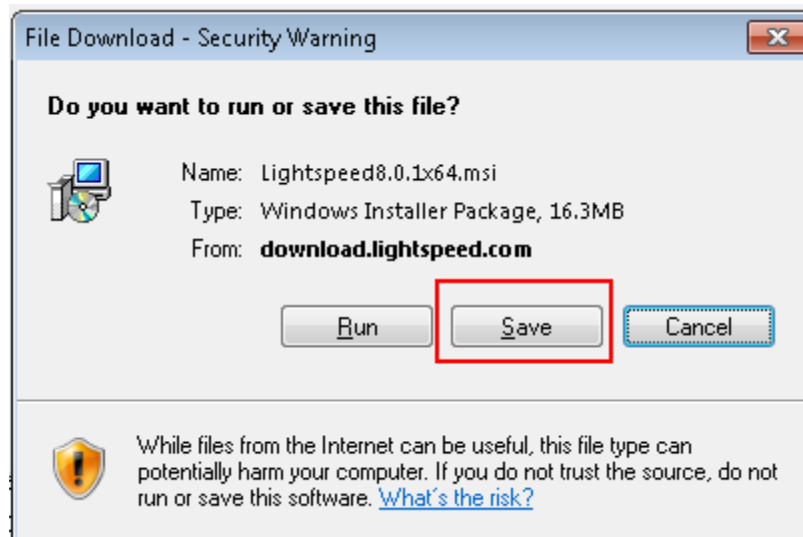
[Lightspeed Trader Install \(64-bit\)](#)

*If you are unsure if your Operating System supports 64-bit programs, install the 32-bit version of Lightspeed Trader.

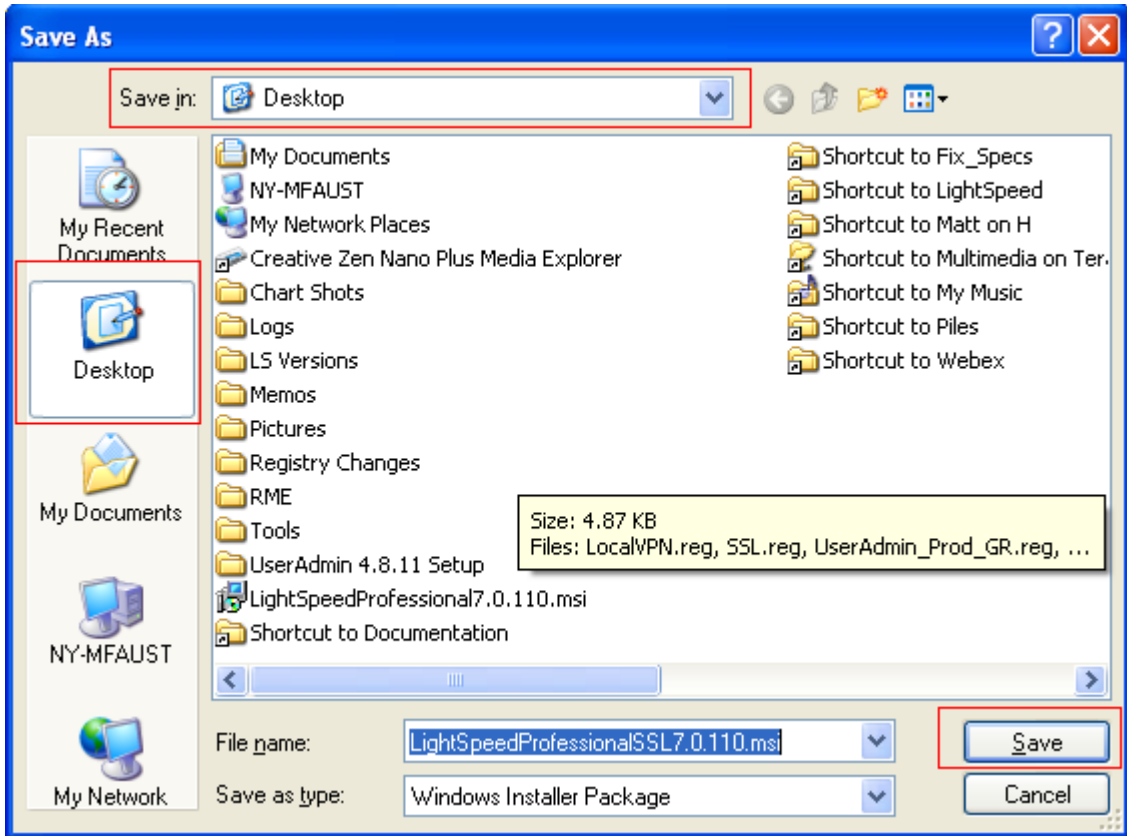
**VPN Users upgrading to 64-bit version of Lightspeed Trader must also upgrade their VPN Software below

[Latest Version Release Notes](#)

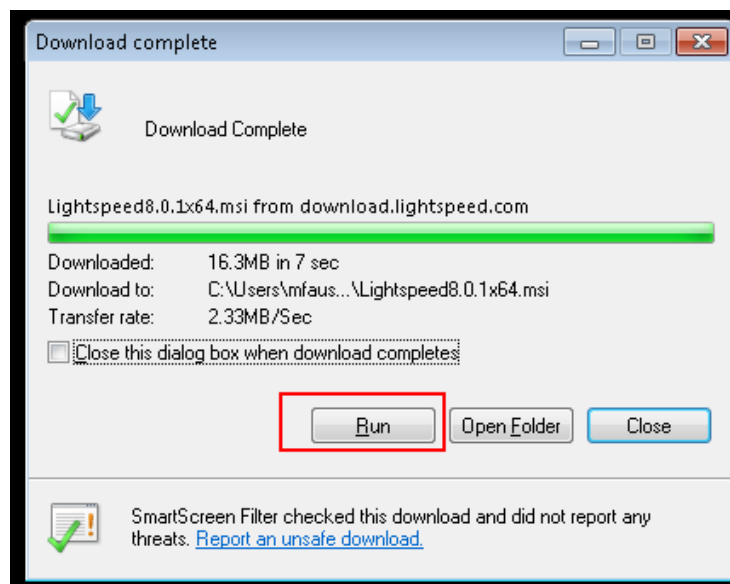
- 5) The following screen should appear, confirming that you would like to download the Lightspeed software. Please select “**Save**” to Save the Lightspeed Install to your computer.



- 6) Windows will ask you where you would like to Save the Lightspeed Install. Select **Desktop** from the dropdown and click **Save**.



- 7) Once the download is complete, you will see a Download Complete confirmation. Click **Run** as seen below:



- 8) Once the installation is complete, click **Close** and proceed to your Desktop to log in to Lightspeed. You will now see the Lightspeed Icon on your desktop. Just **doubleclick the icon** and the login screen below will appear:



- 9) Be sure that SSL is selected in the dropdown seen below. Use the same login credentials provided for the website to log in to Lightspeed SSL*. You are now ready to trade.



***Unlike Lightspeed VPN, the Lightspeed SSL Traders need to be set up in advance by Lightspeed Operations Team. If you are unsure about your setup, or cannot log in, please call Lightspeed Tech Support for assistance at 1 (888) LSPD-123, Option 4.**