



member FINRA, SIPC

**SUBJECT:** LIGHTSPEED INSTALLATION GUIDE FOR MAC OS X

**DATE:** 9/25/2014

---

**Thank you for choosing Lightspeed Trader!**

**This Memo will guide you through the Lightspeed Trader Installation on the Mac OS X for first time users. Please carefully follow this step by step guide:**

- 1) To begin, please login to the <http://www.lightspeed.com/> website using the credentials provided to you:

Select Log In and it will take you to the page seen right. Enter your credentials.

Please note that the password entry is case sensitive.

**Log In**

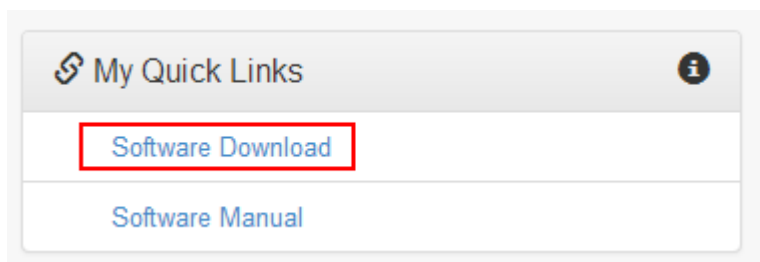
Lightspeed customers, please enter your username and password.  
To open an account or continue an online account application, please [click here](#)

Username: USERNAME

Password: .....

Log On

- 2) Once you are logged in, click **“Software Download”** from the Quick Links on the left of the page.



- 3) This will take you to the screen seen below. Select “**Lightspeed Trader for Mac Install.**”

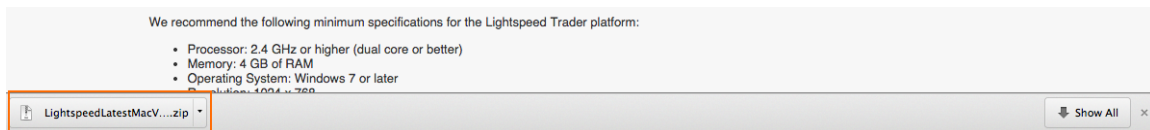
## Trader Software and Documentation

### Getting Started With Lightspeed Trader

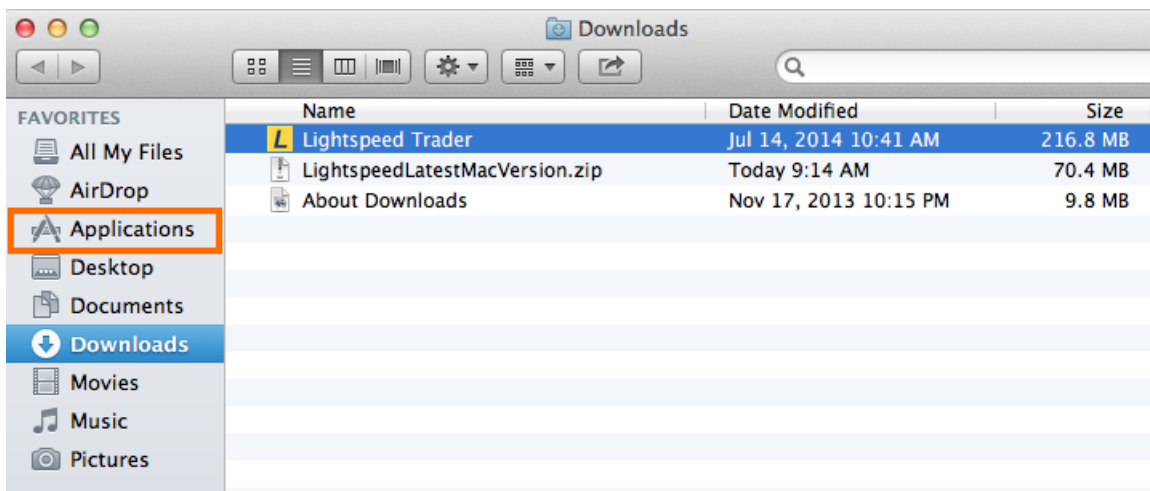
- ⓘ Lightspeed Installation Guide
- ⓘ Latest Version Release Notes
- ⓘ Lightspeed Trader Install (32-bit)
- ⓘ Lightspeed Trader Install (64-bit)
- ⓘ Lightspeed Trader Mac Install (OS X 10.6 or Higher)

\*If you are unsure if your Operating System supports 64-bit programs, install the 32-bit version of Lightspeed Trader.  
\*\*VPN Users upgrading to 64-bit version of Lightspeed Trader must also upgrade their VPN Software below

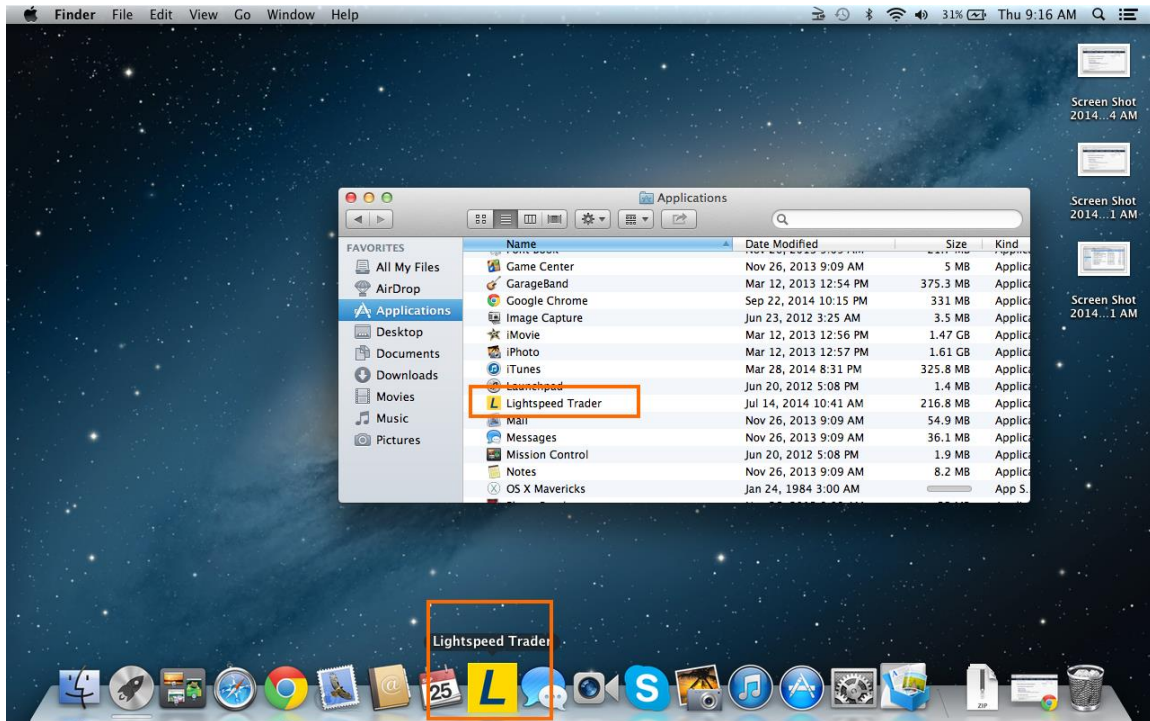
- 4) After the download has completed, a ribbon will notify you at the bottom of the screen. Click on the downloaded file:



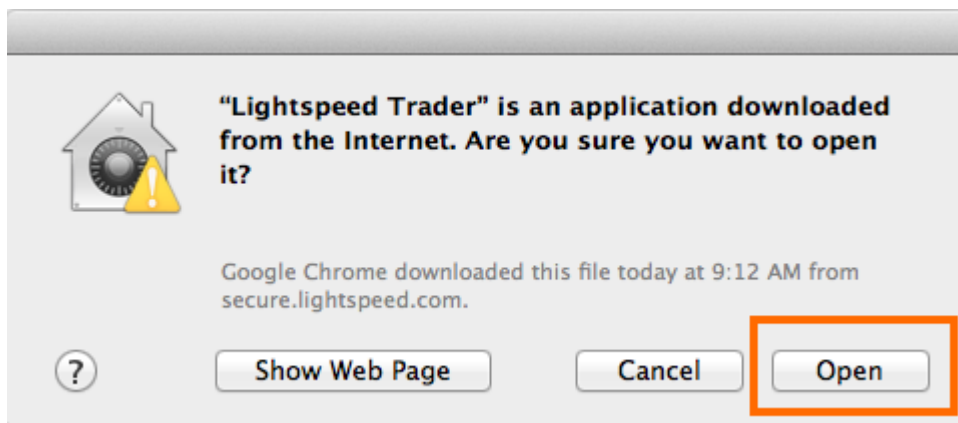
- 5) Drag Lightspeed Trader to your **Applications** folder. You may also be prompted to do this.



- 6) Now open your applications folder and drag the Lightspeed Trader Icon into to your **Icons Dock**:



- 7) Click on Lightspeed Trader to start the application. If you are prompted for a confirmation, click **Open**:



- 8) Be sure that SSL is selected in the dropdown at bottom right. Use the same login credentials provided for the website to log in to Lightspeed Trader\*. You are now ready to trade.



.....

**\* If you cannot log in to Lightspeed Trader, or experience any technical difficulty, please call Lightspeed Tech Support for assistance at 1 (888) LSPD-123, Option 4.**