

The New Lightspeed Trader Version 8.2.360 is now available for download.

How do I download the version?

Visit our website or download the 64 bit version of Lightspeed here:

<https://download.light speed.com/Lightspeed x64 8.2.360.0.msi>

What changes should I look for?

Option Modification

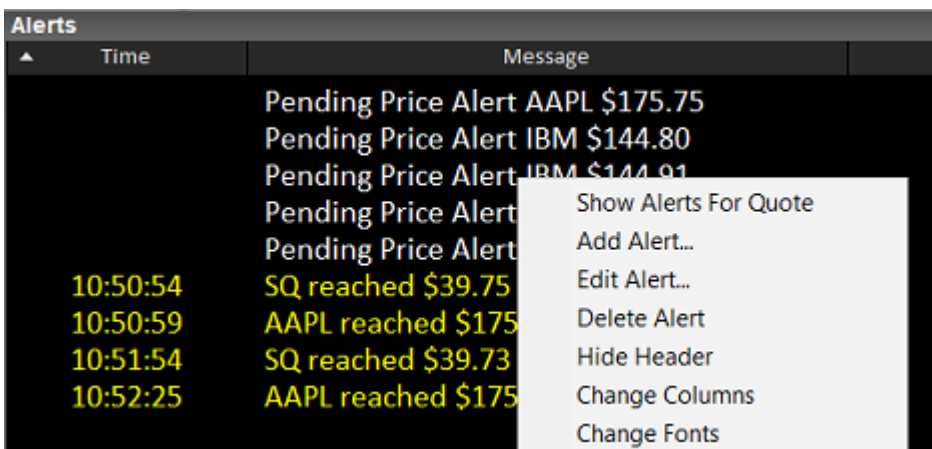
Right click on an option order or complex option order and select modify. A complex option order entry window will open. You can change the parameters of your single or multi-leg order here and select Modify when done. The popup seen below will confirm your changes:

The screenshot shows the 'Option Order Modification' window. At the top, it displays 'SQ' with a price of 39.99, a change of +0.67, and a volume of 39.98 x 40.01. The window includes fields for Qty (1), Price Override (0.41), TIF (Day), Market (SMRT), and Order Type (Limit). There are buttons for 'Reset', 'Reverse', 'Add Equity Leg', 'Save as:', 'Spreads', and 'Strategies'. On the right, there are fields for 'Legs' (Single/Multiple), 'Pay \$' (41), and 'Receive \$'. A 'Modify' button and a 'Cancel Order' button are also present. Below the controls is a table with columns: Del, Type, Expiration, Strike, Contract, Side, Ratio, Price, Bid, Ask, Last. The table contains two rows: a Buy Call with strike 40.00 and a Sell Call with strike 41.00. At the bottom, there is a payoff diagram with a y-axis from -41.00 to +59.00 and an x-axis from 39.60 to 41.40. The diagram shows a flat line at -41.00 until the strike price of 40.00, then a line with a positive slope that crosses the x-axis at 40.41 and reaches +59.00 at 41.00. A legend at the bottom right shows '0.36 (0.43) 0.50'.

The screenshot shows a 'Confirm Complex Order Modification' dialog box. It has a question mark icon and a title bar. The dialog is split into two columns: 'Cancel' and 'Replace'. Under 'Cancel', it lists: Debit, SMRT, 1, Buy 1 SQ Feb 16, Call 40, Sell 1 SQ Feb 16, Call 41, Limit Order, 0.44, Good For Day, and BP Requirement. Under 'Replace', it lists: Debit, SMRT, 1, Buy 1 SQ Feb 16, Call 40, 2.17 x 2.24, Sell 1 SQ Feb 16, Call 41, 1.74 x 1.81, Limit Order, 0.41, (0.36 0.50) 0.14, Good For Day, and \$0.00. At the bottom, there are 'Yes' and 'No' buttons.

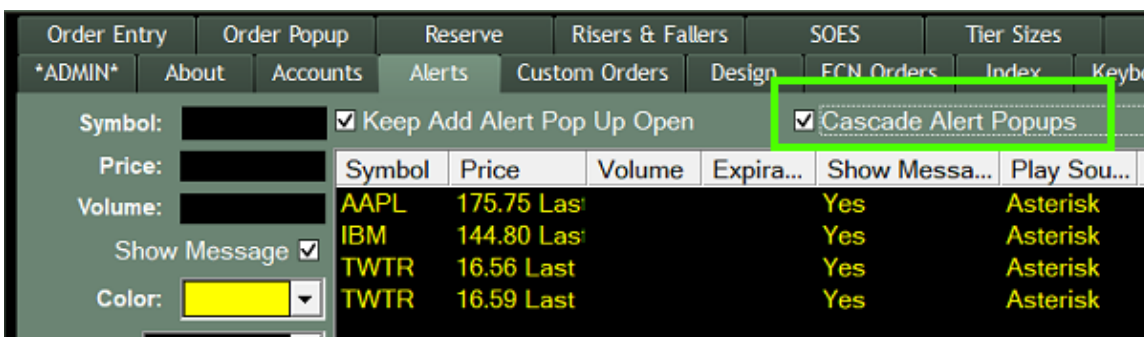
Alerts window displays pending alerts, edit alerts

The Alerts window now displays pending alerts in addition to triggered alerts. You can right click on an alert to edit it and an alert popup will appear.



Option for Alert Notifications to display cascaded

Select this option on the Alerts config tab seen below to have Alert notifications cascade instead of stack.



Add Year High/Low to Level 2

Add 52W Low and/or 52W High to the Level 1 section of your Level 2 in the Layout Tab of the MM Boxes config tab.



Symbol and Window count in Messages window at Log in

Lightspeed™

A DIVISION OF LIME BROKERAGE

At Log in you will get a summary of your open windows, the # of Equity and Option Level 2 subscriptions, the number of Equity Level 1 subscriptions and the number of Equity Trade subscriptions. This is important information for monitoring your data usage and keeping your connection to Lightspeed fast and efficient.

