



member FINRA, SIPC

SUBJECT: LIGHTSPEED TRADER VERSION 8.2.171

DATE: 2/21/2017

The New Lightspeed Trader Version 8.2.171 is now available for download.

How do I download the version?

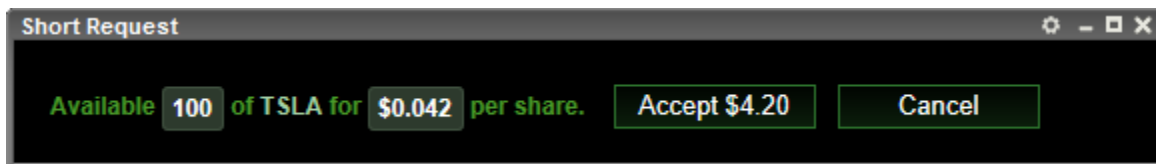
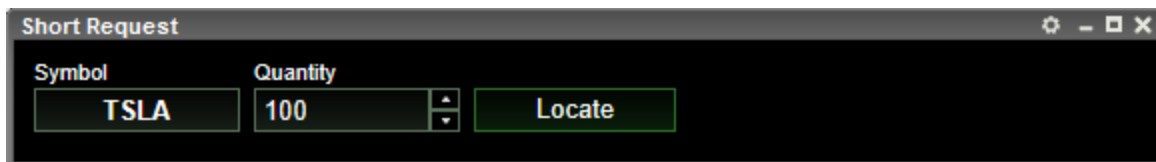
Visit our website or download the 64 bit version of Lightspeed here:

[https://download.lightspeed.com/Lightspeed 8.2.171.0 x64.msi](https://download.lightspeed.com/Lightspeed%208.2.171.0%20x64.msi)

What changes should I look for?

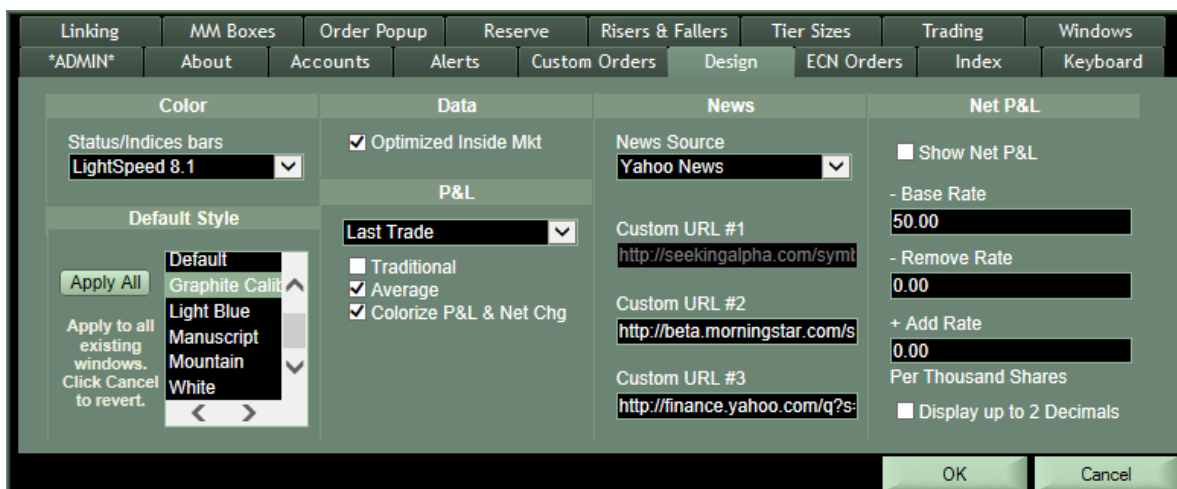
Short Requester Window

Request additional locates from Velocity. Contact your relationship manager for access to the short requester.



Set your Style for All Windows in the Design Tab

Create your own styles or choose from some of Lightspeed Trader's predefined styles. Set your style for every window by selecting Apply All in the Design Tab, seen below. Some windows may not apply your style (Risers and Fallers, Complex Order Entry Window). Note: LST now has a new style to select Calibri Graphite



Alert and Execution Sounds

Configure your Alert and Execution sounds by choosing a Windows sound. You can then modify the windows sound to any custom sound.

Option Chain Background Color

Option to color in the money calls and puts

Call	Last	Change	Bid	Ask	Volume	Delta	Close	Expiration T...	Expiration	Strike
Feb 10, 257.5	11.39	+5.89	10.70	11.15	312	0.9469	5.50	Weekly	Feb 10, '17	257.50
Feb 10, 260	8.30	+4.58	8.30	8.70	960	0.917	3.72	Weekly	Feb 10, '17	260.00
Feb 10, 262.5	6.80	+4.64	5.95	6.45	991	0.851	2.16	Weekly	Feb 10, '17	262.50
Feb 10, 265	4.10	+2.88	4.00	4.35	4,017	0.7286	1.22	Weekly	Feb 10, '17	265.00
Feb 10, 267.5	2.51	+1.96	2.44	2.60	5,019	0.5606	0.55	Weekly	Feb 10, '17	267.50
Feb 10, 270	1.32	+1.06	1.31	1.40	6,946	0.3757	0.26	Weekly	Feb 10, '17	270.00
Feb 10, 272.5	0.62	+0.48	.62	.66	6,108	0.2167	0.14	Weekly	Feb 10, '17	272.50
Feb 10, 275	0.32	+0.23	.28	.36	5,008	0.118	0.09	Weekly	Feb 10, '17	275.00
Feb 10, 277.5	0.22	+0.13	.14	.18	1,705	0.0613	0.09	Weekly	Feb 10, '17	277.50
Feb 10, 280	0.10	+0.01	.07	.13	2,081	0.0398	0.09	Weekly	Feb 10, '17	280.00
Feb 17, 257.5	11.88	+4.78	11.85	12.25	62	0.8093	7.10	Monthly	Feb 17, '17	257.50

VWAP in Level 2

Add VWAP as one of the Level 1 Fields in your Level 2 Window in the MM Boxes Tab > Layout Subtab

TIER N1		CLOSE	262.08	LAST	268.54
HI	271.18	OPEN	266.25	VOL	4,830.4
LO	266.15	CHG	+6.46	CHG %	+2.46%
VWAP	268.92	EXCHG	NSDQ	B SHRS	0

1	ARCA	268.46	1	BATY	268.60	3	268.52	.50
1	BATS	268.46	1	EDGX	268.60	3	268.61	.30
1	CHEX	268.46	1	EDGA	268.61	X	268.59	.20
1	NSDQ	268.45	1	IEXG	268.61	3	268.46	.1
1	IEXG	268.45	2	NSDQ	268.63	Q	268.45	.15
1	BATY	268.38	1	BATS	268.78	3	268.56	.88
1	EDGX	268.35	1	BATS	268.78	3	268.55	.10
1	EDGA	268.34	2	ARCA	269.10	X	268.59	.01
1	PHLX	268.27	1	SBSH	269.91	S	268.62	.1
1	ROSY	268.11	1	PHLX	270.00	3	268.56	.1
1	ROSY	268.11	1	GSCO	271.88	3	268.66	.12
1	ROSY	268.11	1	GSCO	271.88	3	268.58	.52
1	ROSY	268.11	1	GSCO	271.88	3	268.58	.1

Can Increment OE Popup or OEW Spinner by Tick

Set your Price Increments to Tick Size, this will automatically increment/decrement your OE Popup AND your Order Entry Window Spinner by \$0.05 in Tick Pilot Symbols.

