



member FINRA, SIPC

**SUBJECT:** LIGHTSPEED TRADER VERSION 8.2.103

**DATE:** 10/3/2016

---

The New Lightspeed Trader Version 8.2.103 is now available for download.

## How do I download the version?

Visit our website or download the 64 bit version of Lightspeed here:

<https://download.lightspeed.com/Lightspeed 8.2.103.0 x64.msi>

## What changes should I look for?

### - Add VWAP column, Tick Size Column, Spread Column

VWAP, Spread, and Tick Size (for the Tick Pilot Program) are now available columns in the Level 1 dropdown of your Watchlist, Positions, or Lightcan Windows.

	Volume Weighted ...	Tick Size	Last Price	Spread
TSLA	212.4748		213.04	0.14
NFLX	102.007		102.68	0.02
DIS	92.3518		92.4487	0.01
V	82.7661		82.85	0.01
WM	63.6277		63.635	0.01
FLR	50.5808		50.63	0.01
FSLR	38.954		38.79	0.03
WTR	30.2005		30.14	0.02
ZBZZT	20.0066	.05	19.775	0.30
ZAZZT	10.5504	.05	10.65	0.15
JAKK	8.6403	.05	8.625	0.05

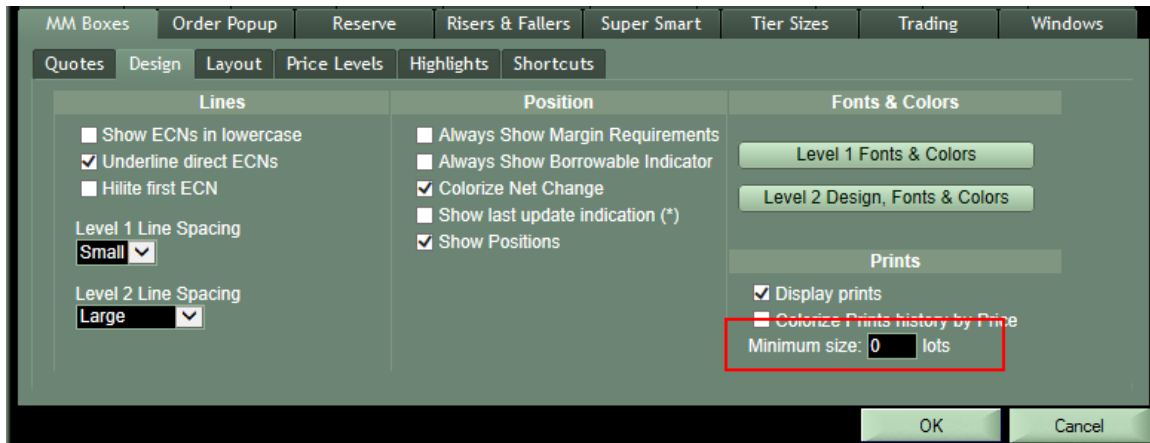
### - GTC is now a TIF instead of an Order Type

LST has changed how users send GTC orders. You may now select GTC from the TIF dropdown, seen below:

Symbol	OIH	Shares	100	Price	29.11	Market	NITE
Type	Limit			0.00		TIF	GTC
Buy	Inside Bid	29.11	Inside Ask	29.12	Sell		

## - Can Display Odd Lot Prints

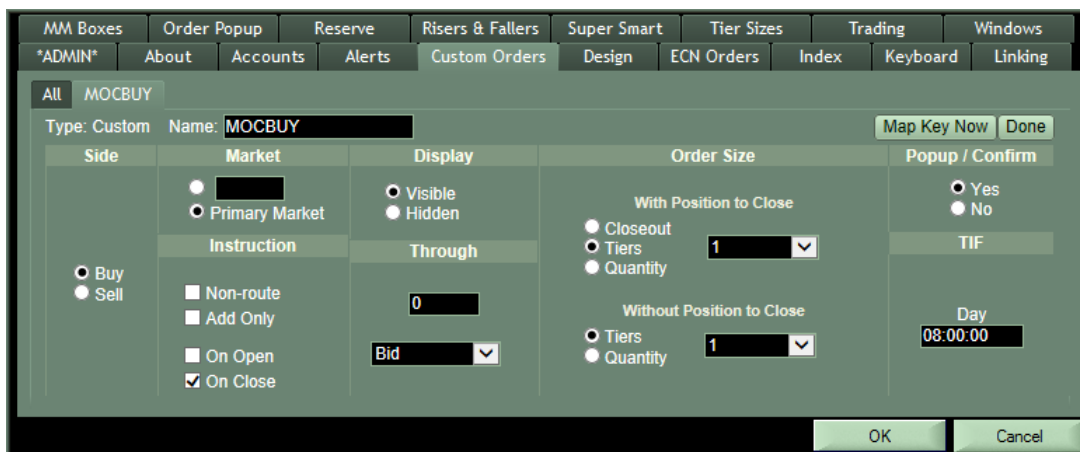
To display odd lot prints in your Level 2 and Time and Sales Windows, change the Minimum Lot Size to 0, seen here in the MM Boxes Tab, Design subtab. By default, the minimum Lot Size for all users is 1 (representing 100 shares).



## - New Custom Order Features

Select Primary Market instead of entering in a Market. Orders will go to ARCA, NSDQ, NYSE, AMEX, and BATS in their respective listed symbols.

Users can also create custom On Open and On Close Orders now. Be sure to send your On Open and On Close orders to the correct Market.



**BATS On Open and On Close Orders**

Users can now send On Open and On Close Orders in BATS listed symbols.

**Display .05 indication for Tick Pilot Securities in L2**

As part of the Tick Pilot Program, orders in some symbols must be sent in \$0.05 increments. Look for the red '.05' indication in your Level 2 for Tick Pilot symbols.

JAKKS Pacific, Inc.									
<b>JAKK</b> <span style="color: red; font-weight: bold;">.05</span>									
Tier N1		Cls 0.00		L 8.62					
H 8.80		O 8.55		V 49.9					
Low 8.55		Chg +0.00		% 0%					
19	NSDQ	8.60	8.65	NSDQ	61	Q	8.62	1	
						3	8.65	1	
18	BATY	8.60	8.65	BATY	33	3	8.65	2	
6	EDGX	8.60	8.65	BOSX	31	3	8.65	1	
4	BATS	8.60	8.65	ARCA	12	X	8.62	1	
4	BOSX	8.60	8.65	EDGA	12	3	8.62	1	
4	IEXG	8.60	8.65	EDGX	12	S	8.65	1	
2	ARCA	8.60	8.65	EDGX	12	Y	8.60	.59	
2	EDGA	8.60	8.65	PHLX	10	3	8.62	1	
2	PHLX	8.60	8.65	BATS	9	3	8.65	1	
12	PHLX	8.55	8.65	IEXG	8	3	8.65	1	
1	LULD	7.75	9.55	LULD	1	B	8.62	1	
						Q	8.62	3	
						Q	8.60	.33	