



member FINRA, SIPC

SUBJECT: LIGHTSPEED TRADER VERSION 8.1.3

DATE: 11/13/2014

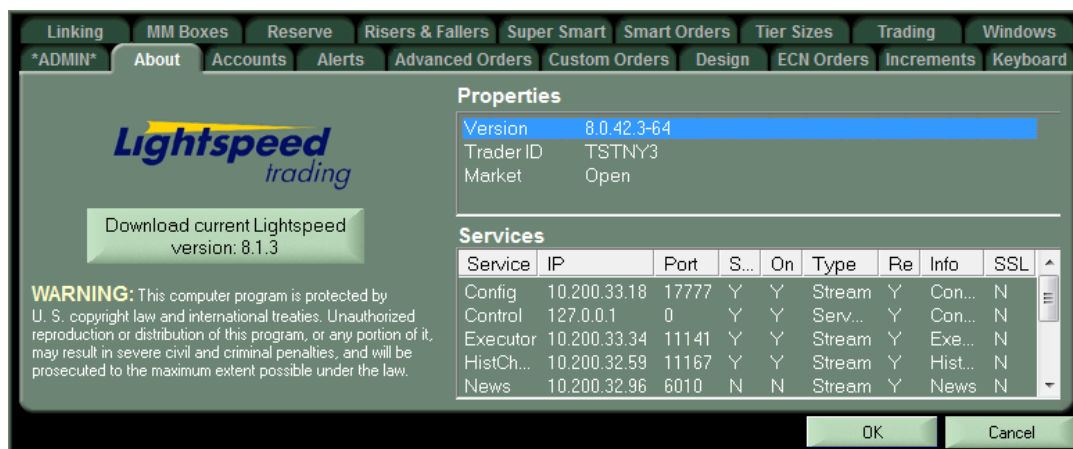
The New Lightspeed Trader Version 8.1.3 is now available for download.

How do I download the version?

Visit our website or download the 64 bit version of Lightspeed here:

<https://download.lightspeed.com/LatestLightspeedVersion64.msi>

Or upgrade to latest version from the About tab, as seen below:

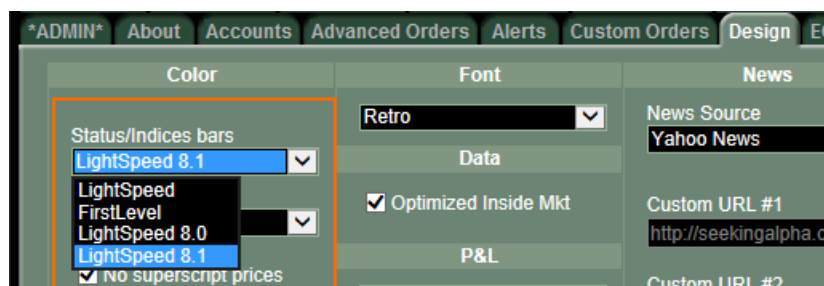


Clicking the above button will download the latest version of Lightspeed Trader to your Desktop. Log out and run the install at your convenience.

What changes should I look for?

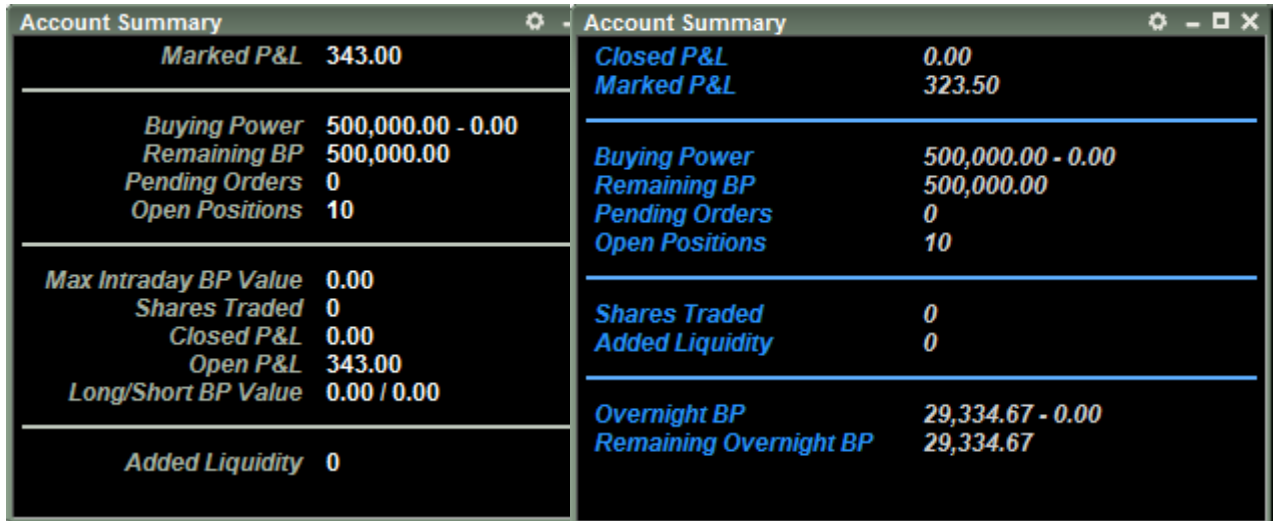
New Index Bar

Select the 8.1 Index Bar in your Design Tab. The customizable Index Bar allows users to add and remove their own fields and customize fonts. Add symbols, indices, or account information of your choice. Customize your own abbreviations:



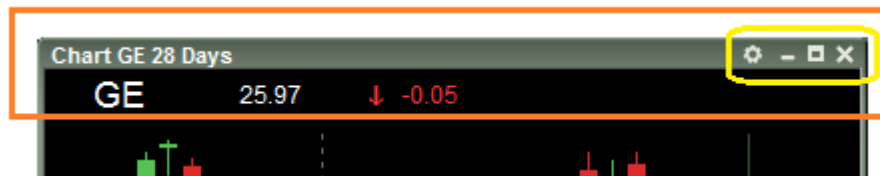
New Account Summary Window

Customize the font, color, and alignment in the new account summary window



Maximize and New Borders

Use the maximize button to enlarge windows. Use the gear to access the window's settings. Right click on the banner to find each window's system menu.



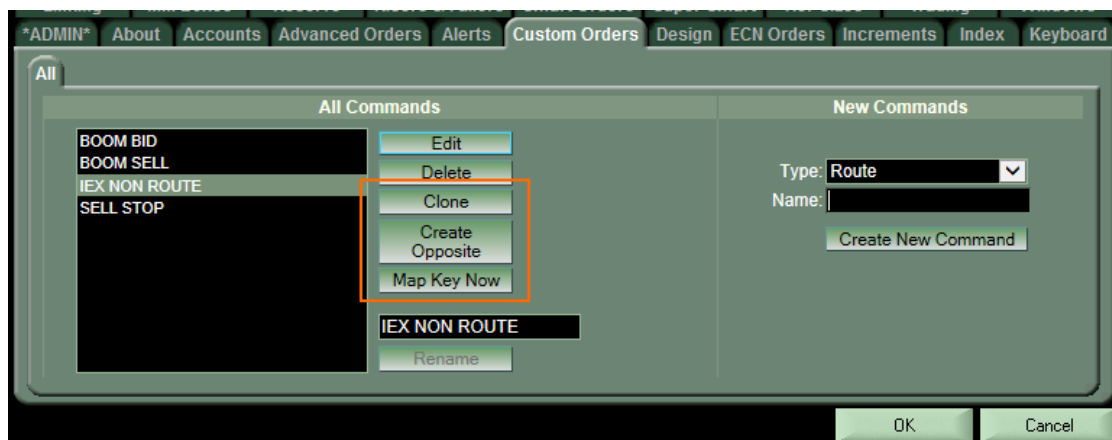
New Custom Order Creation

New functionality on the Custom Orders home screen allows the user to:

Clone a key to create a copy of an existing key

Create Opposite to create the other side of an existing key (will switch buy to sell, bid to ask)

Map Key Now to go straight to the Keyboard tab and map your command to the Keyboard



What changes were made to options functionality?

Complex Order Midpoint in COE

Click on any of these values in the bottom right corner of the COE to propagate your order with this price

Complex Options Order Entry

AAPL 102.05 ↑ -0.59 Bid 102.05 Ask 102.06 25,952,715

Qty: 1 Price Override: 0.21 TIF: Day Market: ISEX Order Type: Limit

Legs: Single Multiple

Pay \$: 21

Receive \$:

Go

Del	Type	Expiration	Strike	Contract	Side	Ratio	Price	Bid	Ask
X	Call	Sep 26, '14	102.00	Std	Buy	1	0.68	0.66	0.67
X	Call	Sep 26, '14	103.00	Std	Sell	2	0.27	0.27	0.28
X	Call	Sep 26, '14	104.00	Std	Buy	1	0.09	0.09	0.10
X									

0.19 (0.21) 0.23

Level 2 and Option Level 2 shared config settings

Option Level 2 will use active/inactive colors and other Level 2 settings

AAPL Sep 26, '14 102.00 Call

AAPL Sep 26, '14 - Sep 26, '14 - 102.00 - Std - Call - Put

LAST 0.60 HI 1.19 LO 0.36
CLOSE 1.10 OPEN 0.81 CHG -0.50
VOL 26,697
ASK 0.59

Qty	Market	Price	Order Type	Market	Cxl
403	AMEX	0.57	0.60	AMEX	300 Z 0.60 3
31	ARCA	0.58	0.59	ARCA	13 M 0.60 10
50	BATS	0.58	0.59	BATS	14 Q 0.61 3
1	BOSX	0.56	0.61	BOSX	22
301	CBOE	0.57	0.60	CBOE	274
50	CBSX	0.40	0.83	CBSX	50
17	GMNI	0.58	0.60	GMNI	162
41	ISEX	0.58	0.60	ISEX	124
245	MIAX	0.57	0.60	MIAX	245

Qty: 1 Price: 0.61 Order Type: Limit Market: SMRT Cxl: X

SELL TIF: Day BUY

CancelOptionBuys CancelOptionSells

AAPL Sep 26, '14 101.00 Call

AAPL Sep 26, '14 - Sep 26, '14 - 101.00 - Std - Call - Put

LAST 1.18 HI 1.98 LO 0.81
CLOSE 1.87 OPEN 1.50 CHG -0.69
VOL 19,409
ASK 1.20

Qty	Market	Price	Order Type	Market	Cxl
28	AMEX	1.18	1.21	AMEX	101 R 1.18 5
12	ARCA	1.18	1.20	ARCA	11 Q 1.18 45
17	BATS	1.18	1.21	BATS	37 Q 1.18 5
3	BOSX	1.16	1.22	BOSX	24 Z 1.18 2
30	CBOE	1.18	1.21	CBOE	218 I 1.18 1
8	CBSX	1.17	1.48	CBSX	50 Q 1.18 10
16	GMNI	1.17	1.20	GMNI	2 Q 1.20 4
74	ISEX	1.17	1.20	ISEX	1 Z 1.20 5
92	MIAX	1.16	1.21	MIAX	144 Q 1.20 2

Qty: 1 Price: 1.20 Order Type: Limit Market: SMRT Cxl: X

SELL TIF: Day BUY

CancelOptionBuys CancelOptionSells