



member FINRA, SIPC

TO: LIGHTSPEED TRADING CUSTOMERS/TRADERS

SUBJECT: LIGHTSPEED TRADER VERSION 8.0.35

DATE: 6/11/2013

The New Lightspeed Trader Version 8.0.35 is now available for download.

How do I download the version?

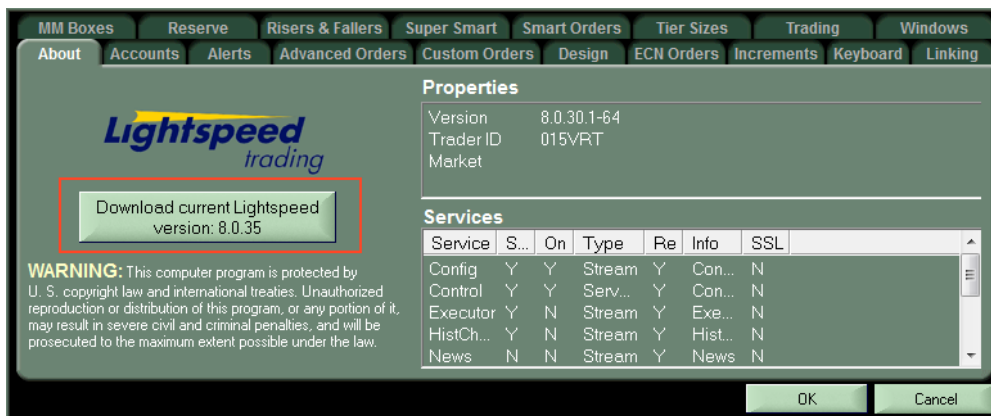
If you have a 64 bit Operating System, download the 64 bit version of Lightspeed here:

<https://download.light speed.com/Lightspeed 8.0.35 x64.msi>

32 bit users can download the latest version of Lightspeed here:

<https://download.light speed.com/Lightspeed 8.0.35 w32.msi>

Or upgrade to latest version from the About tab, as seen below:



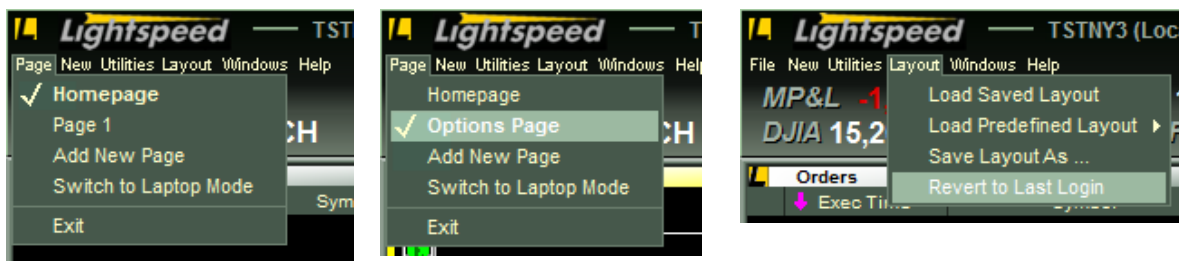
Clicking the above button will download the latest version of Lightspeed Trader to your Desktop. Log out and run the install at your convenience.

What changes should I look for?

New Menu Bar

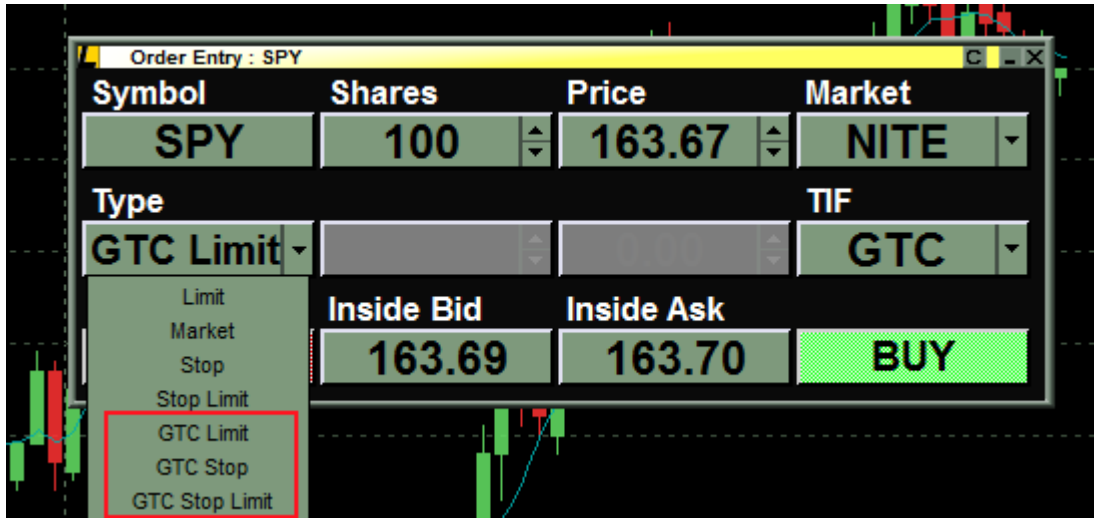
File renamed to Page. Page 0 renamed to Homepage. Current Page has a checkmark indicator. Right click and rename any page.

Use Layout Menu to Load and Save Layout instead of Import and Export respectively. Use "Revert to Last Login" to go back to previously saved changes.



GTC Orders in Options and Equities via the Order Entry Window

Select GTC Limit, GTC Stop, or GTC Stop Limit from the Equity Order Entry Window as seen below:

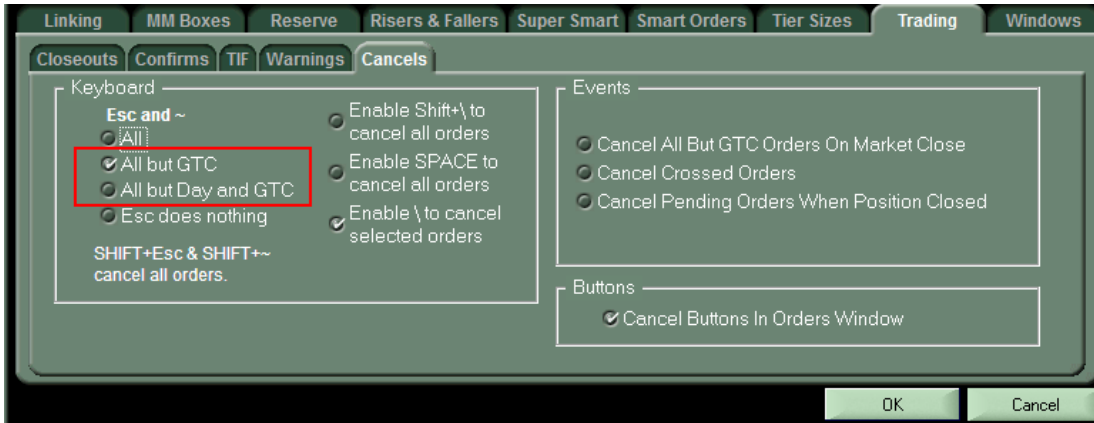


Select GTC from the TIF dropdown in the Option Order Entry Ticket or the Complex Option Order Entry Window as seen below:



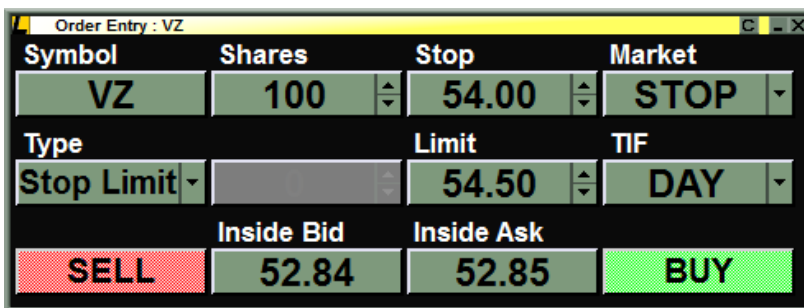
GTC Specifications in Cancels subtab

Set controls for how Esc handles 'Good Till Cancelled' orders in the cancels tab



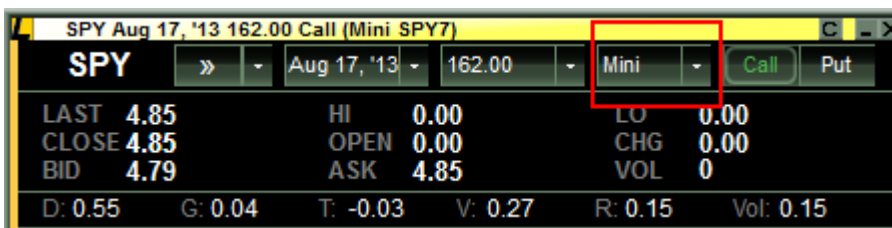
Stop Limits via the Order Entry Window

Select Stop Limit from the Type dropdown. Remember to make your limit higher than the stop Price when buying and lower than the stop price when selling.



Option Level 2 Mini Indication

Users can now select Mini, Jumbo or Standard from the dropdown seen below:



Option Chain Modifications

- Filter out or only display Minis, Jumbos, or other special option roots
- New Display separates options by Contract Type and Expiration
- Add Column to display Expiration Type: Weekly, Monthly, Quarterly Options
- Add Column to display Contract Type: Standard, Mini, Jumbo
- Add Position column and other position-related informational columns

Chain SPDR S&P 500											
SPY		Near Month	Near Money	All	5	162.58	↑ +0.80	162.57 x 162.58	75,168,617		
Calls	Bid	Ask	All	Open Interest	Volatility	Contract Type	Expiration Ty...	Position	Expiration	Strike	
!SPY/130510C162	1.02	1.03	Standard	31,118	0.11	Standard	Weekly		May 10, '13	162.00	
!SPY/130510C162.5	.70	.72	Mini SPY7	7,445	0.11	Standard	Weekly		May 10, '13	162.50	
!SPY/130510C163	.45	.46	13,000	21,004	0.10	Standard	Weekly		May 10, '13	163.00	
!SPY/130510C164	.15	.16	38,609	21,351	0.10	Standard	Weekly	-4	May 10, '13	164.00	
!SPY/130510C165	.05	.06	5,486	12,908	0.11	Standard	Weekly		May 10, '13	165.00	
!SPY7/130510C162	1.00	1.04	202	205	0.11	Mini	Weekly		May 10, '13	162.00	
!SPY7/130510C162.5	.69	.72	14	14	0.11	Mini	Weekly		May 10, '13	162.50	
!SPY7/130510C163	.44	.47	13	220	0.10	Mini	Weekly		May 10, '13	163.00	
!SPY7/130510C164	.14	.17	7	100	0.10	Mini	Weekly		May 10, '13	164.00	
!SPY7/130510C165	.04	.06	3	100	0.10	Mini	Weekly		May 10, '13	165.00	
!SPY/130518C161	2.19	2.20	8,348	116,489	0.11	Standard	Monthly		May 18, '13	161.00	
!SPY/130518C162	1.48	1.49	48,618	156,445	0.10	Standard	Monthly	5	May 18, '13	162.00	
!SPY/130518C163	.91	.92	29,992	158,752	0.10	Standard	Monthly		May 18, '13	163.00	
!SPY/130518C164	.49	.50	30,696	72,592	0.09	Standard	Monthly		May 18, '13	164.00	
!SPY/130518C165	.24	.25	27,429	101,507	0.09	Standard	Monthly		May 18, '13	165.00	
!SPY7/130518C161	2.16	2.21	1	1,219	0.11	Mini	Monthly		May 18, '13	161.00	
!SPY7/130518C162	1.47	1.50	35	292	0.10	Mini	Monthly		May 18, '13	162.00	
!SPY7/130518C163	.90	.93	32	1,016	0.10	Mini	Monthly		May 18, '13	163.00	
!SPY7/130518C164	.40	.54	2	305	0.09	Mini	Monthly		May 18, '13	164.00	

New Exit Dialogue

All Orders now remain live by default.

