



member FINRA, SIPC

TO: LIGHTSPEED TRADING CUSTOMERS/TRADERS
FROM: OPERATIONS GROUP
SUBJECT: NEW LIGHTSPEED TRADER VERSION 8.0.30.1
DATE: 3/11/2013

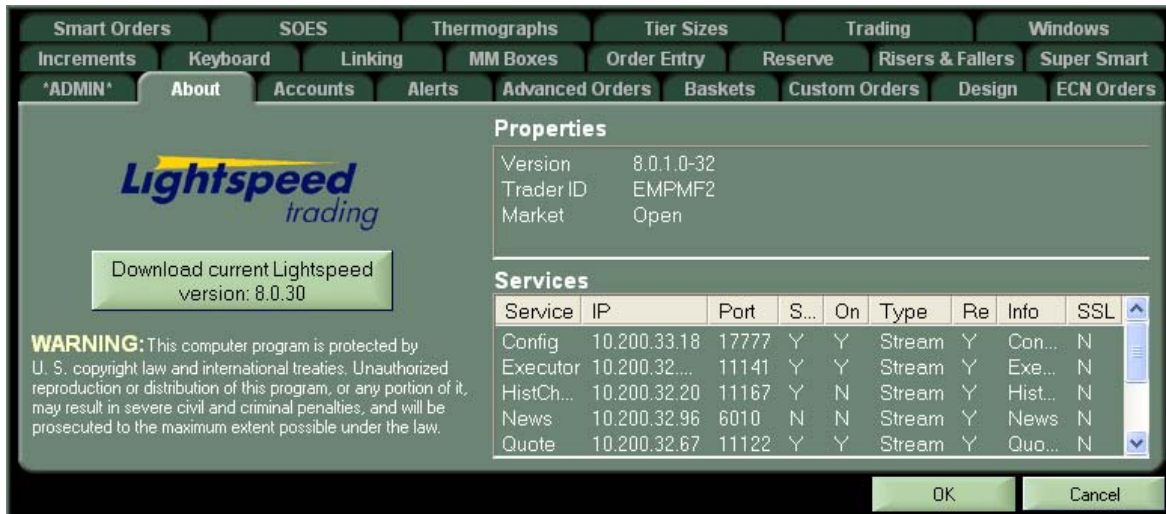
The New Lightspeed Trader Version 8.0.30.1 is now available for download.

How do I download the version?

If you have a 64 bit Operating System, download the 64 bit version of Lightspeed here:
<https://download.lightspeed.com/Lightspeed8.0.30x64>

32 bit users can download the latest version of Lightspeed here:
<https://download.lightspeed.com/Lightspeed8.0.30w32>

Or upgrade to latest version from the About tab, as seen below:



Clicking the above button will download the latest version of Lightspeed Trader to your Desktop. Log out and run the install at your convenience.

What changes should I look for?

Greeks in Option Chain

Add Greeks columns by right clicking on the chain and selecting Change Columns. Change the dropdown to Greeks and select from:

| Calls | Bid | Ask | Volume | Last Price | Delta | Gamma | Rho | Theta | Vega | Volatility | Expiration | Strike |
|------------------|-------|-------|--------|------------|--------|--------|--------|---------|--------|------------|-------------|--------|
| !AAPL/130316C445 | 20.40 | 20.55 | 954 | 20.60 | 0.5571 | 0.0087 | 0.286 | -0.2011 | 0.6293 | 0.2898 | Mar 16, '13 | 445.00 |
| !AAPL/130316C450 | 17.85 | 18.05 | 2,581 | 17.95 | 0.514 | 0.0087 | 0.2651 | -0.2013 | 0.6357 | 0.2889 | Mar 16, '13 | 450.00 |
| !AAPL/130316C455 | 15.55 | 15.70 | 1,040 | 15.50 | 0.4708 | 0.0087 | 0.2459 | -0.1995 | 0.6344 | 0.2878 | Mar 16, '13 | 455.00 |
| !AAPL/130316C460 | 13.50 | 13.60 | 1,431 | 13.80 | 0.4284 | 0.0086 | 0.2246 | -0.196 | 0.6259 | 0.2873 | Mar 16, '13 | 460.00 |

- Delta: Measures impact of a change in price of the underlying symbol.
- Gamma: Measures impact of a change in the delta.
- Vega: Measures impact of a change in the volatility.
- Theta: Also known as time decay, this measures impact of a change in time remaining.
- Rho: Measures impact of a change in interest rates
- Volatility: This is the implied volatility based on the median of the bid and ask price.
- Volatility %: This is the volatility displayed as a % instead of as a decimal.

New Option Level 2

Added functionality to the Option L2 including Time and Sales, Positions, Greeks and Order Entry:

Click for Easy Symbol Setting when Unlinked
Use the Dropdown for Previously Clicked Symbols

Option Quotes

SPY Feb 8, '13 150.00 Call Put

LAST 0.71 HI 1.08 LO 0.70
CLOSE 1.51 OPEN 0.99 CHG -0.80
BID 0.70 ASK 0.71 VOL 19,920

D: 0.45 G: 0.19 T: -0.11 V: 0.06 R: 0.01 Vol: 0.13

Pos: 2 / 0.74 Pend: 1

| Qty | Market | Price | Order Type | Market | Cxl |
|------|--------|-------|------------|--------|------|
| 157 | ARCA | 0.70 | 1390 | PHLX | 0.71 |
| 120 | BATS | 0.70 | 346 | CBSX | 0.71 |
| 120 | NSDQ | 0.70 | 342 | AMEX | 0.71 |
| 10 | AMEX | 0.70 | 318 | ARCA | 0.71 |
| 2319 | PHLX | 0.69 | 210 | NSDQ | 0.71 |
| 574 | CBSX | 0.69 | 182 | BATS | 0.71 |
| 25 | BOSX | 0.69 | 761 | ISEX | 0.71 |
| 986 | ISEX | 0.69 | 71 | CBOE | 0.71 |
| 163 | CBOE | 0.69 | 29 | BOSX | 0.72 |

Qty: 1 Price: 0.79 Order Type: Limit Market: SMRT Cxl: X

SELL TIF Day BUY

Annotations:

- Positions Bar:** Double Click On Position to Propagate Order Ticket w Pos Quantity
- Greeks Bar:** (Points to the Greeks section)
- Integrated Time & Sales:** (Points to the order flow table)
- Integrated Order Ticket:** (Points to the order entry form)

- Create Multiple Option L2's. Select the linked Option L2 to set then double click on an option in the Chain, Positions Window, Order Window, Executions Window or Watchlist
- Highlight Own Order
- Configure Cancel Button to cancel last order or all orders
- Other Defaults seen below



Easier Configuring of Visible Options in the Option Chain Window:

| Calls | Bid | Ask | Volume | Last Price | Delta | Gamma | Theta | Vega | Volatility | Expiration | Strike |
|-------------------|------|------|--------|------------|--------|--------|---------|--------|------------|------------|--------|
| !SPY/130208C149 | 1.41 | 1.43 | 5,956 | 1.43 | 0.6621 | 0.1635 | -0.1031 | 0.0586 | 0.1392 | Feb 8, '13 | 149.00 |
| !SPY/130208C149.5 | 1.08 | 1.09 | 5,290 | 1.02 | 0.5816 | 0.1817 | -0.107 | 0.0624 | 0.1338 | Feb 8, '13 | 149.50 |
| !SPY/130208C150 | .79 | .80 | 24,087 | 0.79 | 0.4871 | 0.191 | -0.1063 | 0.0639 | 0.1299 | Feb 8, '13 | 150.00 |
| !SPY/130208C150.5 | .54 | .55 | 19,678 | 0.55 | 0.3909 | 0.1912 | -0.0979 | 0.0616 | 0.125 | Feb 8, '13 | 150.50 |
| !SPY/130208C151 | .35 | .36 | 16,721 | 0.31 | 0.2932 | 0.1761 | -0.0839 | 0.0558 | 0.1216 | Feb 8, '13 | 151.00 |

- Added Near Month to display multiple expirations within the next 30 days
- Select the # of Options to display per expiration

Option to reset Complex Option Order Entry Window after order is entered

Right click on COE and select settings to configure

