

**TO:** LIGHTSPEED TRADING CUSTOMERS/TRADERS  
**SUBJECT:** ROUTING TO CROSSFINDER NOW AVAILABLE IN LIGHTSPEED TRADER  
**DATE:** 7/22/2013

Lightspeed Trader now offers access to Credit Suisse's Crossfinder Execution Service for dark liquidity.

[Crossfinder is one of the world's most significant pools of liquidity, bringing clients together to minimize impact and maximize execution quality. Advantages include:

- Opportunity for improved prices - trades at or within the spread
- Reduced signalling risk - none of your order is displayed on the public order book]

[https://www.credit-suisse.com/investment\\_banking/client\\_offering/en/crossfinder.jsp](https://www.credit-suisse.com/investment_banking/client_offering/en/crossfinder.jsp)

The Crossfinder route differs from the already-available Crossfinder + in that Crossfinder stays within Credit Suisse's pool of internal liquidity while Crossfinder + also seeks liquidity from external dark pools.

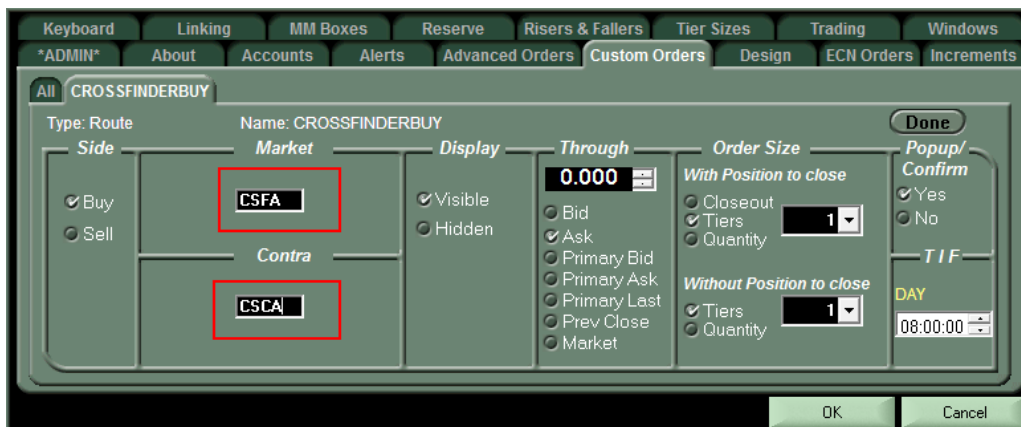
For pricing please refer to our online pricing table at <http://www.lightspeed.com/pricing/routing-fees/>

To send an order with your keyboard or hotbutton, create a custom route with **CSFA** as the Market and one of the following as the Contra:

**CSCA** – Crossfinder Aggressive, Aggressive mode, executions will cross the spread.

**CSCN** – Crossfinder Neutral, Normal mode, executions will be at the midpoint of the NBBO or better

**CSCP** – Crossfinder Passive, Patient mode, executions will capture the full spread



The Crossfinder Aggressive route, **CSCA**, is one of the available Order Types in your equities OEW:

Symbol	Shares	Price	Market
GS	100	165.62	CSFA
Type			TIF
CSCA			DAY
	Inside Bid	Inside Ask	
SELL	165.61	165.65	BUY

If you would like to have either of the other Crossfinder Routes, Passive or Neutral, added to your OEW in addition, please contact your Relationship Manager: