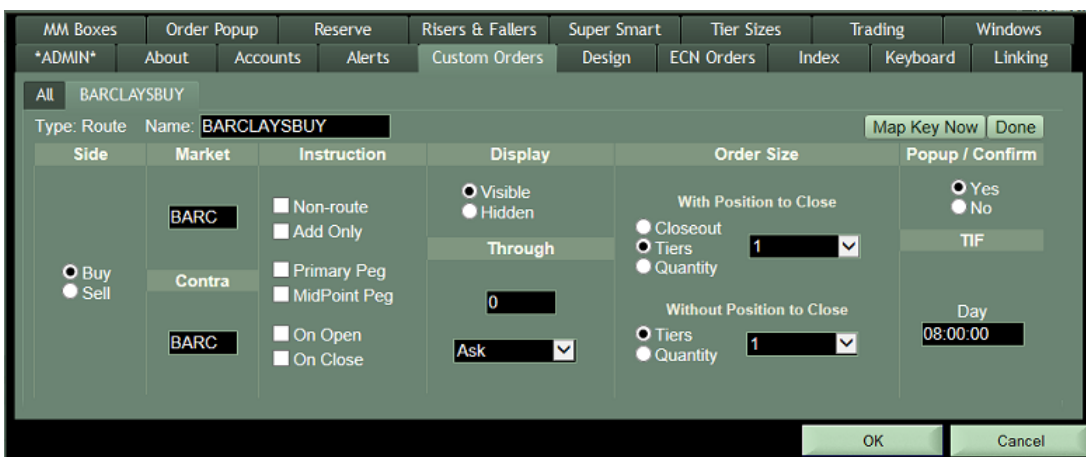


TO: LIGHTSPEED TRADING CUSTOMERS/TRADERS
SUBJECT: ACCESS TO BARCLAYS LX DARK LIQUIDITY IN LIGHTSPEED TRADER
DATE: 4/18/2017

Lightspeed Trader has connectivity to Barclays LX Dark Liquidity Crossing Network.
<https://www.investmentbank.barclays.com/markets/equities-liquid-markets.html#order>

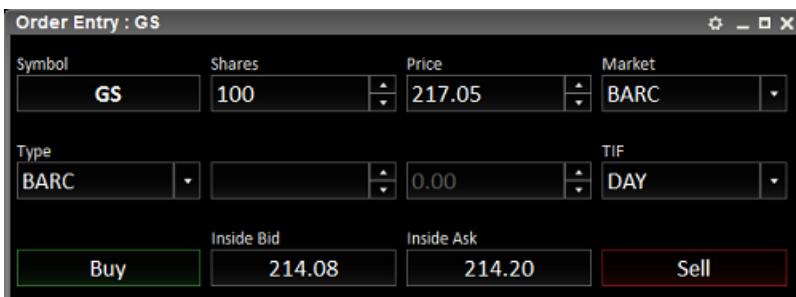
To send an order with your keyboard or hotbutton, create a Custom Route with BARC as the Market and BARC as the Contra, as seen below:



Some things to remember:

- Limit Orders and Marketable orders with no dark liquidity available will rest in the dark.
- Round Lots only. Odd lots will be rejected. Mixed Lots may be executed if they are matched exactly, or, they may be executed in round lot increments with the remainder cancelled back.

To have the Barclays LX Route added to your order entry window as seen below, please contact your Relationship Manager:



For pricing please refer to our online pricing table at <http://www.lightspeed.com/pricing/routing-fees/>