

TO: LIGHTSPEED TRADING CUSTOMERS/TRADERS

SUBJECT: LIGHTSPEED DATA MANAGEMENT

DATE: 6/24/2009

The US Markets continue to experience high volatility and it is important that all traders take time to consider how the increase in market data may be impacting their local trading environment (your PC, your local bandwidth, etc). Here are some helpful tips for making your Lightspeed Trader running at its fastest given ever-increasing market data volumes:

- Minimize the symbol count Lightspeed Trader is requesting. Take a look at the stocks in your Watchlists and remove those you no longer look at, every little bit counts.
- Close any extra windows such as charts, Level 2's, or tickers which you may no longer be using
- Remove symbols from your tickers when you can. Eliminate phantom positions.
- Take a look at other pages of your layout! Some data-intensive windows may be hidden on previously used pages.

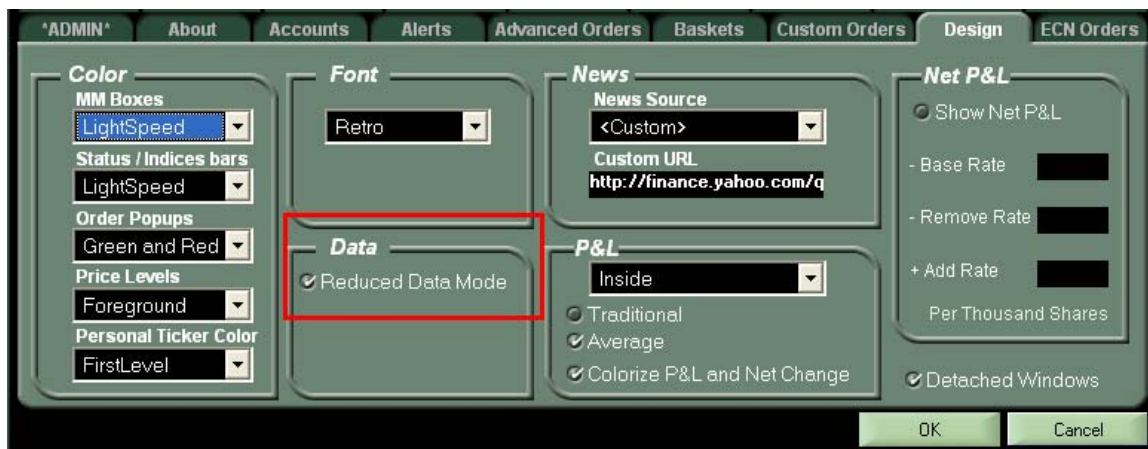
You can map the Pages from the Access Keys on your Keyboard Tab (seen below) and review them. Close every single window you don't use. Charts, Level 2's, and Watchlists residing on other pages are impacting the performance of your platform!





- Close your old Advanced Charts/ TD Charts and upgrade to the new LS Chart. In addition to a more integrated look and feel, they also require less bandwidth and will not interfere with your quote and execution data. Go through your layout and close all of the old charts, even if you are just trying out the new LS Chart on a pilot basis.
- Use Reduced Data Mode. Go to your Design Tab and turn Reduced Data Mode On. This will significantly decrease the traffic between your LS and our datacenter.

Note: Reduced Data Mode will not delay or buffer Level 2 data in any way. It will only reduce your ability to view High Bandwidth features such as “Personal Tickers” and “Good/ Bad” Messages in your messages window.



- Here's a ranking of the most data-intensive tools from most to least:
 1. Level 2 window, Phantom Stock, Personal Ticker Stock
 2. Chart
 3. Watchlist Symbol

Software performance is a major focus of the Lightspeed development team, however, it is up to you to be sure your software is running at its best for your specific environment. Following the steps above will keep your Lightspeed Trader running at peak performance!