



member FINRA, SIPC

TO: LIGHTSPEED TRADING CUSTOMERS/TRADERS
FROM: OPERATIONS GROUP
SUBJECT: NEW LIGHTSPEED TRADER VERSION 7.0.235.2
DATE: 9/22/2011

The New LightSpeed Trader Version 7.0.235.2 is now available for download.

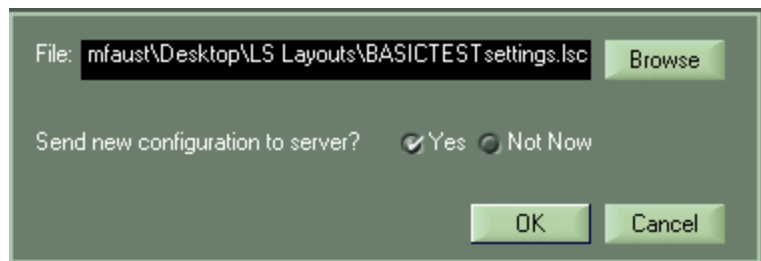
How do I download the version?

<https://download.light-speed.com/LightSpeed7.0.235.2.msi>

What changes should I look for?

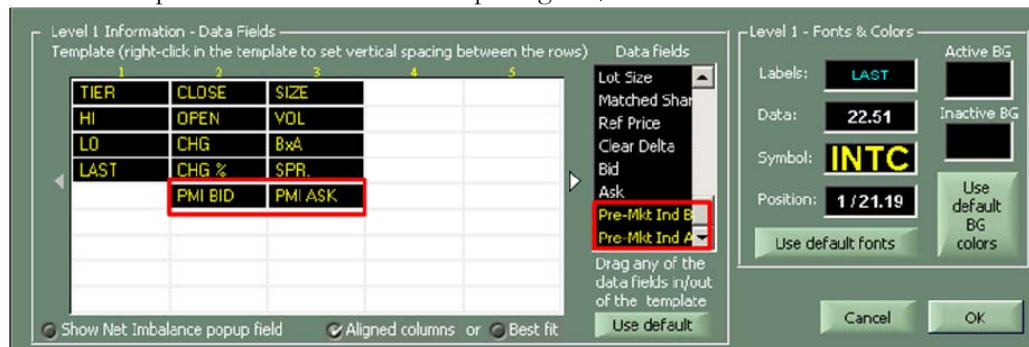
Import/Export Settings

Use the 'Utilities' option in your top bar to import and export your settings locally. When a layout is chosen for import, you will be given the option to save to our servers immediately or wait for the option to save at log-out.



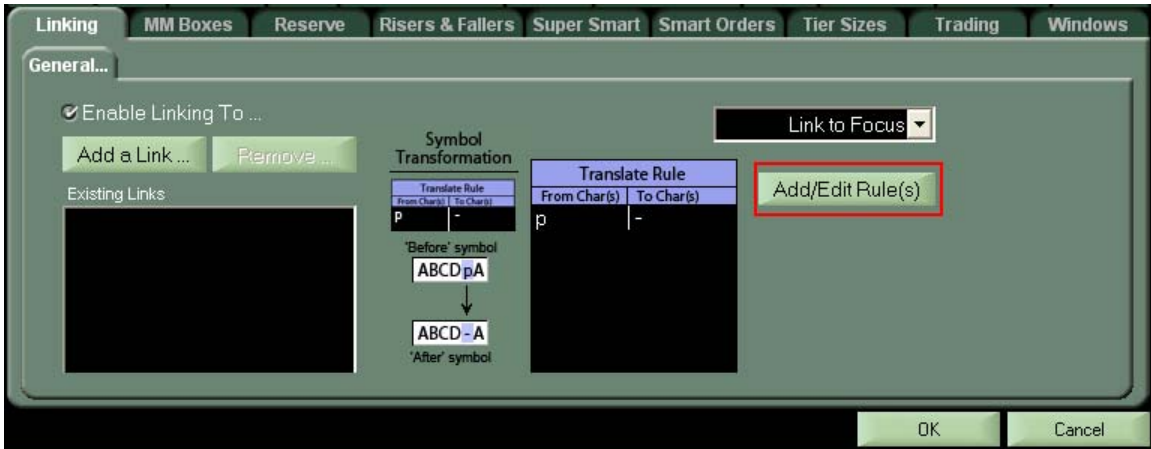
PMI Bid PMI Ask Level 1 Fields inside Level 2

You can now drag and drop Pre-Mkt Ind Bid and Pre-Mkt Ind Ask from the Data Fields list into Level 1 Template in order to view Pre Opening Bid/Ask Indications in Level 1

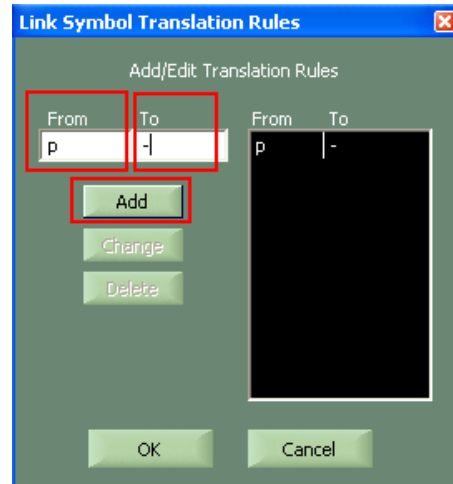


Symbol Translation in General Link

From the Configuration Settings → Linking tab, you can now setup symbol translations for 3rd party applications that are linked to Lightspeed.

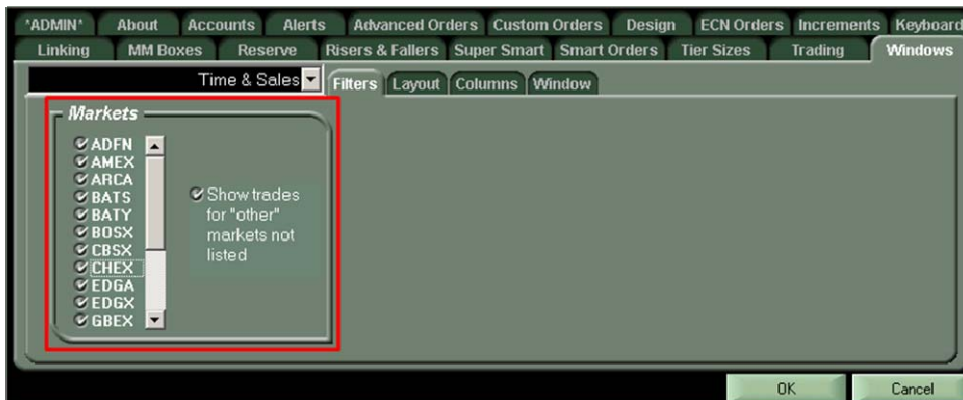


For example, in Lightspeed we use a “p” to designate a preferred stock. A 3rd party application that a trader may link to Lightspeed may use a “-“ to designate preferred class stock. By creating a translate rule From “p” to “-“ (as shown in the example right) you can send the correct symbology to the 3rd party application from Lightspeed.



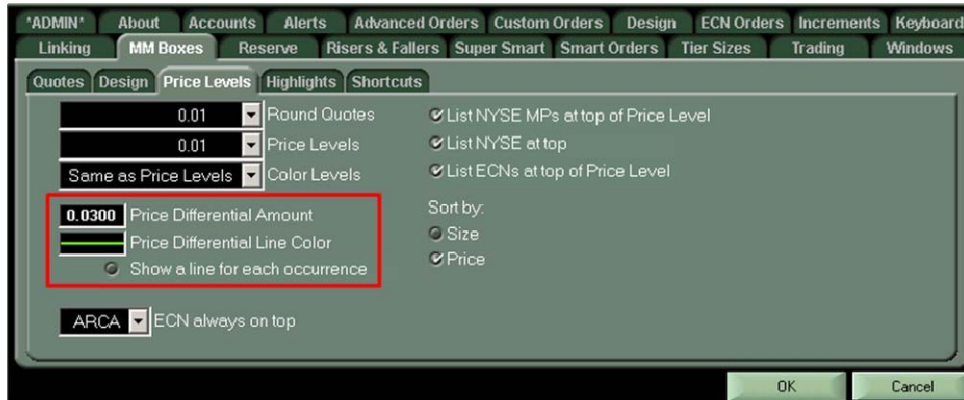
Time and Sales Filtering

Updated list of Markets for time and sales filtering.



Price Differential Lines in the Level 2

Under Configuration Settings → MM Boxes → Price Levels subtab, you can configure a line to show up in Level2 when there is a specified price differential. For example, If you have the price differential amount set to .03 and the line color set to green (as shown below), a green line will show up in Level2 whenever the price level differential is .03 or higher. You can also choose to show a line for each occurrence by checking the appropriate setting.



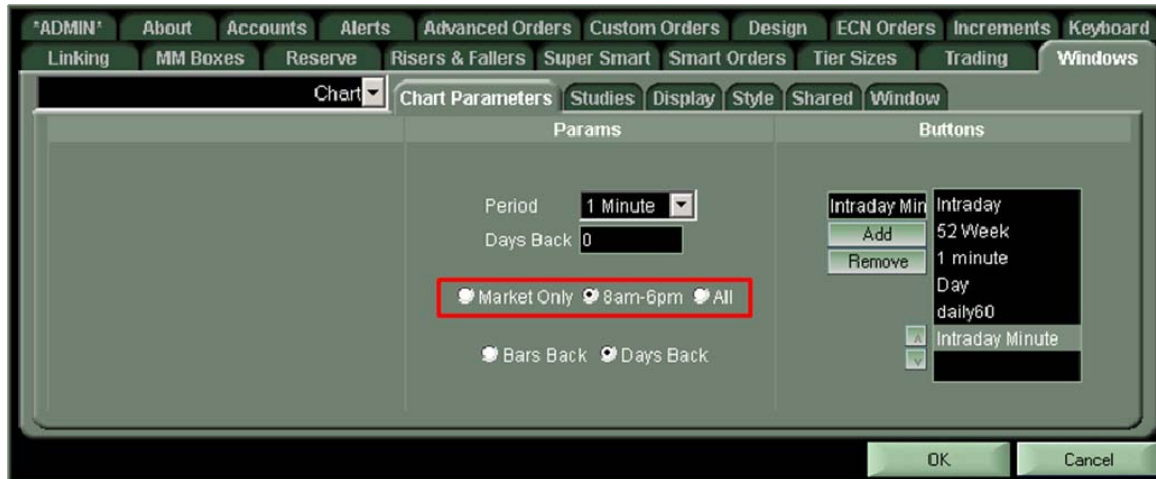
Pending Orders Count in L2

Lightspeed displays the number of pending orders for the typed up stock in Level 2 in the top right hand corner of the Quotes2 window. As seen in the illustration below, there are 2 pending orders on the market in SPY and you can see how it is displayed as "Pend: 2"



Added new Extended hours option in Charts

Now you can select 8am-6pm in the Chart Parameters settings in order to view extended hours in charts.



New User Risk Management Options in Trading Tab, Warnings Subtab

Now you have the ability block orders from being sent that exceed the preconfigured trade warning parameters set on the Lightspeed client. You can do this by setting a value, and checking “Not Allow” next to “When Price is too deep” and/or “When Spread is too large” as shown below.

