



member FINRA, SIPC

**TO:** LIGHTSPEED TRADING CUSTOMERS/TRADERS  
**FROM:** OPERATIONS GROUP  
**SUBJECT:** NEW LIGHTSPEED TRADER VERSION 7.0.226.1  
**DATE:** 5/25/2011

---

The New Lightspeed Trader Version 7.0.226.1 is now available for download.

## How do I download the version?

<https://download.lightspeed.com/LightSpeed7.0.226.1.msi>

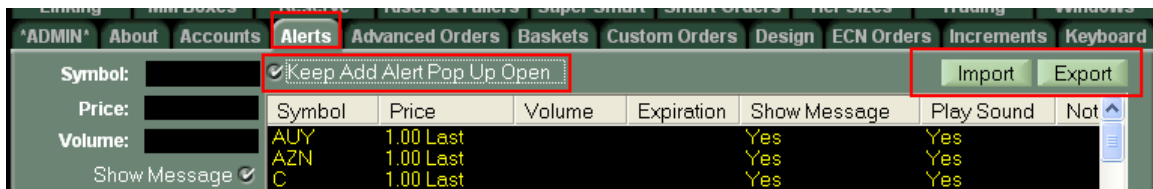
## What changes should I look for?

### Alerts Import/ Export

Users can export Alerts to a spreadsheet (csv file), add new alerts via the spreadsheet, and import a new list. The following is the required format of the csv file; only Symbol and Price-or-Volume are necessary fields:

Symbol	Price	Volume	Exp Year	Exp Month	Exp Day	Color	Show Msg	Note	Sound	L1 Value
XOM	20	0				Yellow	Yes	Buy	Yes	Last
XLV	100	0				Yellow	Yes	Sell	Yes	Bid
XLK	50	0				Yellow	Yes	Hold	Yes	Ask

- If you would like to add to existing alerts, you must first export your existing list, add to it, then import.
- There is a default max import of 500, contact your Relationship Manager to discuss exceeding these limits.

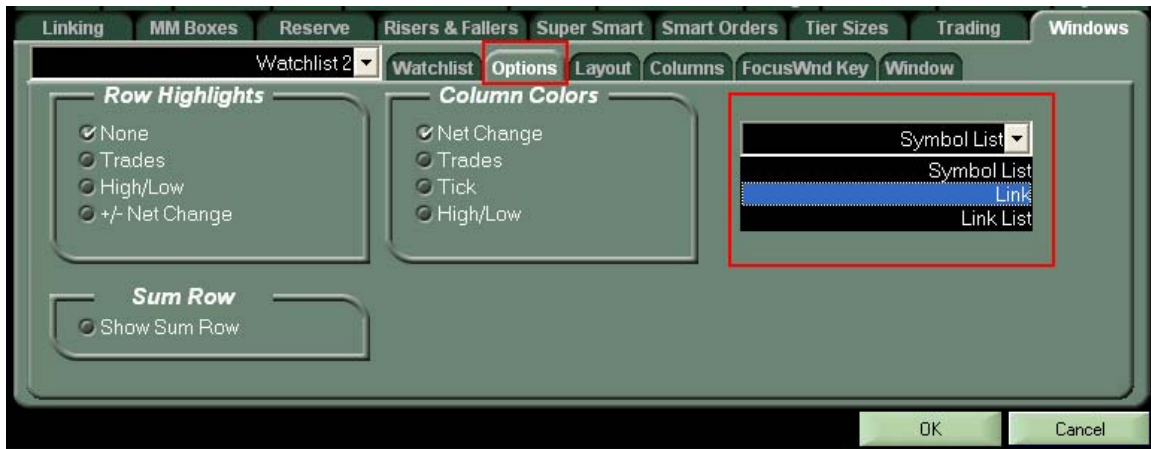


### Ability to Keep Alert Pop up open after setting alert

As highlighted above, when this option is checked the Add Alert Pop Up will remain open until the user dismisses it with ESC.

## Watchlist Linking

Link a watchlist to your Level 2 window in the Watchlist Options Tab to display the stock you currently have typed up. Select Link List to display the custom list that the symbol resides in.

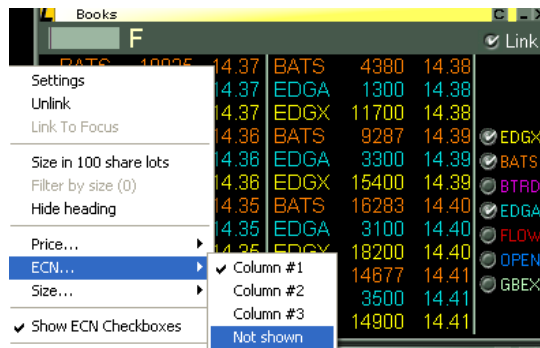


- If the symbol you have typed up resides in more than one list, the window will choose the first list in alphabetical order.

- Users can link multiple watchlists to multiple Level 2's by utilizing the Link Menu.

## Optionally show ECNs in Books Window

Display the ECN Name in the Books window in any column by selecting from the below menu:



## New Watchlist Columns:

**Borrowed Shares:** Displays the specifically located shares you have, per symbol. Available in the Positions dropdown.

**Pre Opening Indication Bid/Ask/Time:** Displays the specialist Pre-Opening Bid and Ask and the time it was last published. Available in the Pre-Opening Indications dropdown.