



member FINRA, SIPC

TO: LIGHTSPEED TRADING CUSTOMERS/TRADERS
FROM: OPERATIONS GROUP
SUBJECT: NEW LIGHTSPEED TRADER VERSION 7.0.216
DATE: 3/23/2011

The New Lightspeed Trader Version 7.0.216 is now available for download.

How do I download the version?

<https://download.lightspeed.com/LightSpeed7.0.216.msi>

What changes should I look for?

Primary Exchange Data available in Positions Window and Watchlist Window

Add Primary Market, Volume, Open, Last, Bid, Ask, Bid Size and Ask Size to see the Level 1 information for the Primary Market in each stock.

	Primary Mar...	Primary Volume	Primary Open	Primary Last	Primary Bid	Primary Ask	Primary Bid Size	Primary Ask Size
FLL	AMEX	12.7	3.81	3.94	3.92	3.94	12	3
MHK	NYSE	119.7	57.18	58.46	58.46	58.54	1	29
QQQQ	HSDQ	14,064.1	57.13	57.61	57.60	57.61	353	73
SPY	ARCA	26,881.9	131.47	132.27	132.27	132.28	335	212

All Imbalance Columns available in Positions Window and Watchlist Window

Use the imbalance dropdown to add all Imbalance Data to your Watchlist:

	Regulatory Imbalance	Imbalance Matched S...	Net Order Imbalance	Imbalance Ref Price	Closing
FBC	1,098,000	230,000	1,039,300	1.28	
PLD	117,800	657,900	1,341,800	13.60	
CVS	0	698,300	-981,400	30.21	
EMC	-1,177,900	914,300	-842,200	21.09	
MI	-1,419,800	669,500	-1,196,400	5.95	
KEY	-1,615,800	615,600	-1,365,000	8.22	



Time Frame Columns in Positions Window and Watchlist Window

User can now display several columns that can be configured for specific time frames (2-60 minutes, or Day). As seen below, users can assign different Time Frames to each column.

Net Change: Change from beginning of the period to Last Price

% Change: Net Change of the Period as a % of Price at beginning of period

Price Range: The range between the High and Low of the period

High Price: High Price for the period

Low Price: Low Price for the period

H/L: Whether the stock is currently at the High or Low of the period

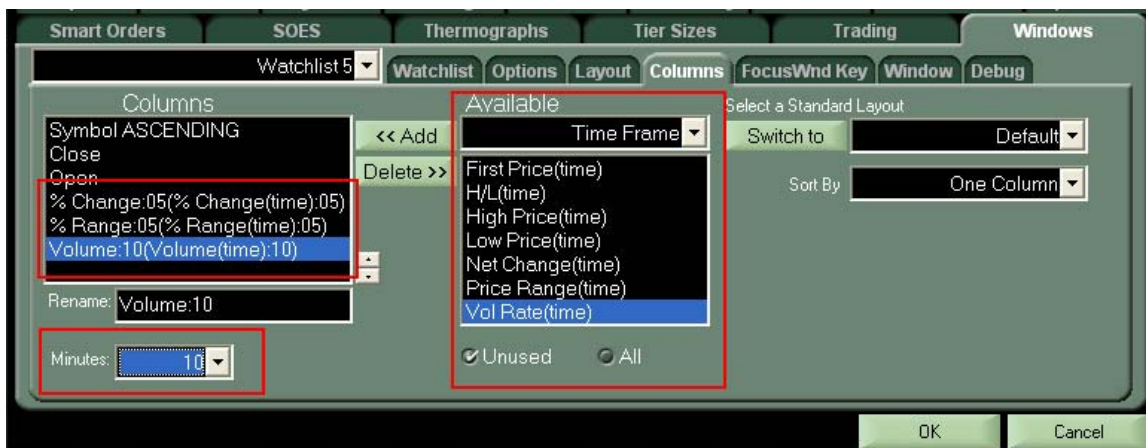
First Price: The price that marks the beginning of the period (when period = Day, the First Price is the previous close)

% Range: Price Range as a % of First Price

Volume: The volume for the period

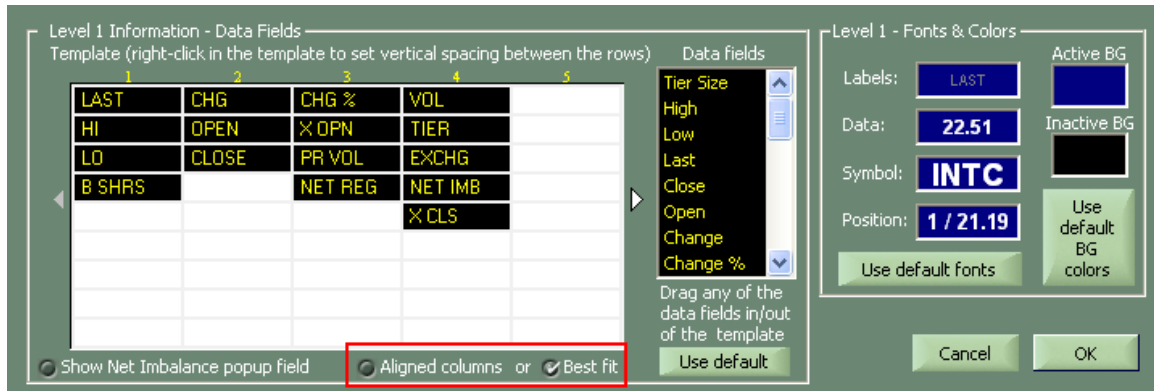
Volume Rate: The volume for the period divided by minutes in the period (if period is Day, Volume is divided by minutes since 9:30 AM EST).

	Close	Open	% Change:05	% Range:05	Volume:10	First Price:05	H/L:05	High Price:05	Low Price:05
C	4.69	4.67	-0.43%	0.43%	15,041.7	4.68	L	4.68	4.66
BAC	13.97	14.16	+0.28%	0.21%	2,350.3	14.16	H	14.20	14.17
ERC	15.03	15.02	+0.00%	0.13%	0.6	15.06	L	15.08	15.06
GE	20.58	20.71	+0.17%	0.20%	746.0	20.51		20.56	20.52
ADM	36.43	36.56	-0.16%	0.17%	80.3	36.74		36.74	36.677
QQQQ	56.855	57.16	-0.02%	0.09%	4,280.9	57.40		57.43	57.38
MHK	56.92	57.185	+0.07%	0.10%	10.9	57.85		57.91	57.85
SPY	130.93	131.48	+0.04%	0.07%	4,481.1	131.71		131.80	131.71
AAPL	342.88	345.29	+0.03%	0.09%	206.9	346.50		346.80	346.48



Level 1 Info Labels in Level 2 can now be renamed:

Double click on an Added Data Field and the below window will appear. Enter your new Label Name and hit Enter or Click OK:



Level 1 in Level 2 "Best Fit" will justify data next to label name

As seen above, select Best Fit to Justify the Data next to the Label Name. Seen below, High Low, and Open have been renamed (H, L, and O respectively) and Data has been justified to "Best Fit."



Re-Established General Link after Log off and On

Lightspeed Trader will re-link to previously linked applications after reconnect, provided that application is already running and in same screen position as previous LS log in session

Option in Increments Tab to dismiss order pop up by pressing any "Alpha Key"

Check this option to close the pop up window by pressing any alpha key on your keyboard

The screenshot shows the 'Increments' tab of a trading software interface. The interface is divided into several sections:

- Price:** Includes settings for 'Left, Right' (0.0100), 'Shift Left, Right' (0.0100), 'Control Left, Right' (0.1000), and 'Add'l Modifiers' (Alt Left, Right) (0.0010).
- Shares:** Includes settings for '< >' (100), 'Shift < >' (1), 'Control < >' (100), and 'Add'l Modifiers' (Alt < >) (100).
- ECN Popups:** Includes 'Up, Down Arrows' (ECN Scroll) and 'Repeating Cmd' (+/- 0.01).
- ECN Scroll:** Includes a dropdown menu (ARCA) and a list of market centers (NYSE, NSDQ, BATS, EDGX, EDGA, BOSX, PHLX).
- Options:** Includes 'Lightspeed original Increment keys' (unchecked), 'Numpad to Tiersize' (unchecked), 'Number keys update...' (unchecked), 'Visible quantity' (unchecked), 'Price' (checked), 'Quantity' (unchecked), 'Dynamic price updates in popup' (checked), 'Leave Order popup open after sending' (checked), and 'Dismiss Order Popup:' (checked).

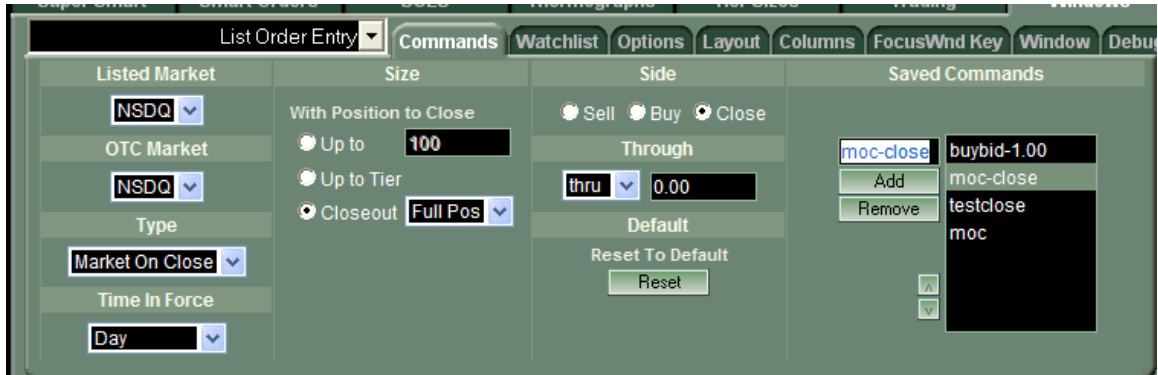
The 'Dismiss Order Popup:' section has two options: 'With mouse click' (checked) and 'With alpha key' (checked and highlighted with a red box). The 'With alpha key' option is the one mentioned in the text above.

At the bottom of the window, there are 'OK' and 'Cancel' buttons.

What are the added features for List Order Entry?

Added Closeout Mode in LOE Command Creation

Create commands that will send orders to close your position regardless of long or short. These commands will appear in your right click menu or can be mapped to a keyboard key to interact with your Positions Window, Watchlist Window, or Imbalance window.



Multiselect in Orders Window and option to "Cancel Selected"

Select any # of orders and right click and hit Cancel Selected or Map Cancel Selected to your Keyboard



List Order Entry MOC, MOO, LOC, LOO will now recognize Primary exchange and send accordingly

Will send orders to ARCA in ARCA symbols, Nasdaq in Nasdaq symbols, NYSE in NYSE symbols.