



member FINRA, SIPC

**TO:** LIGHTSPEED TRADING CUSTOMERS/TRADERS  
**FROM:** OPERATIONS GROUP  
**SUBJECT:** NEW LIGHTSPEED TRADER VERSION 7.0.195.2  
**DATE:** 2/22/2011

---

The New Lightspeed Trader Version 7.0.195.2 is now available for download.

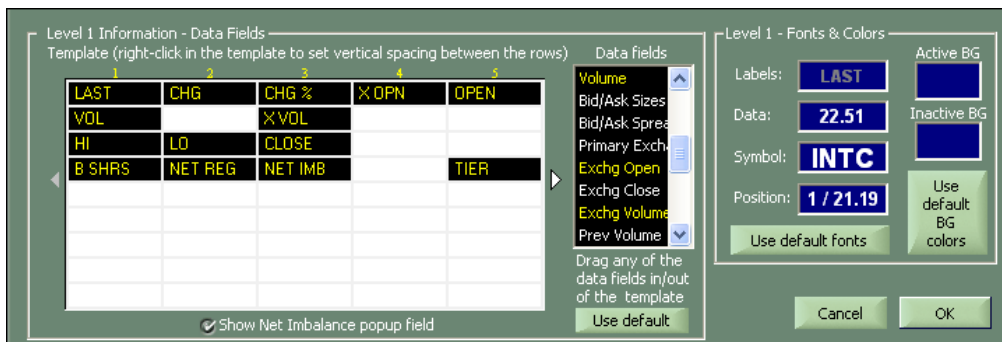
### How do I download the version?

<https://download.lightspeed.com/LightSpeed7.0.195.msi>

### What changes should I look for?

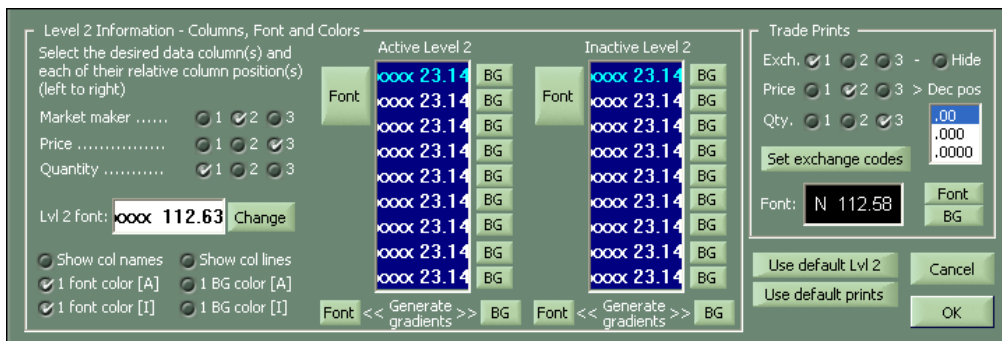
#### New Level 1 map in Level 2 window with new available fields:

Drag any Data Fields to the position of your choice. Users can also right click in Rows to insert custom spacing.



#### Added functionality to have different font/background colors for inactive Level 2 windows

Inactive Background color for Level 1 section also customizable



Added capability to colorize Orders based on type (Buy, Sell, Sell Short) and status (Pending, Partial Fill, Executed, Cancelled):



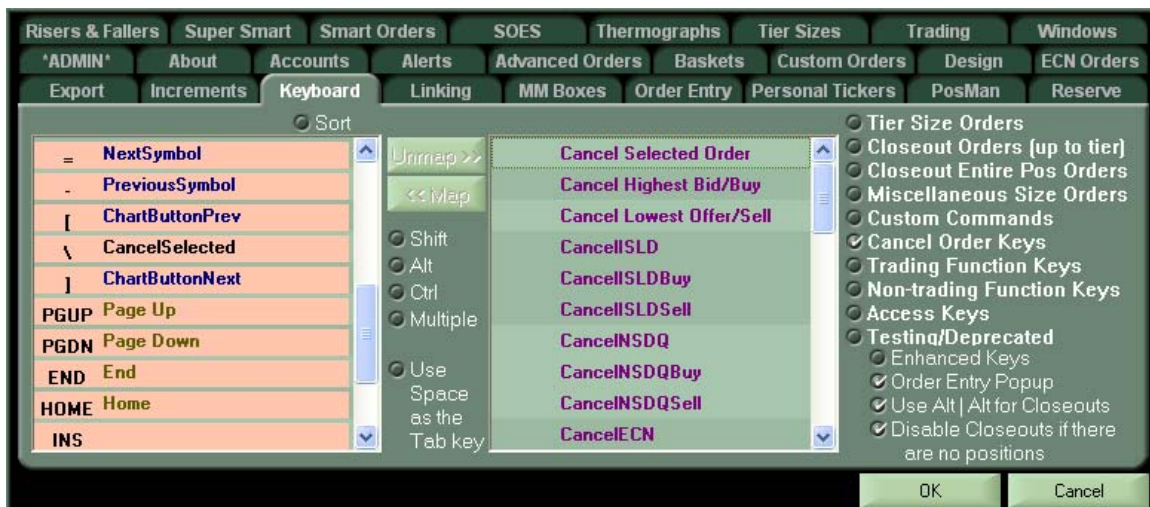
#### Order Entry Remember Location feature

Move window and pin will appear. Click on the pin to lock in the new location. Cannot set separate location for Buy and Sell pop ups.



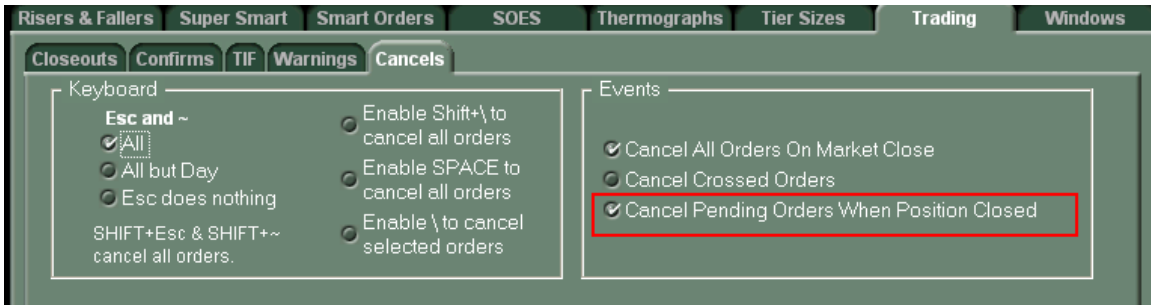
#### New Mappable Keys: - = [ ] \ Print Screen, Scroll Lock, Pause Break

Mappable with and without CTRL, ALT, and SHIFT identifiers



### Option to Cancel Pending Orders for Symbol When Position is Closed

Check the below option in Trading Tab, Cancels subtab to cancel open orders for symbol when position in that symbol is closed/flat.

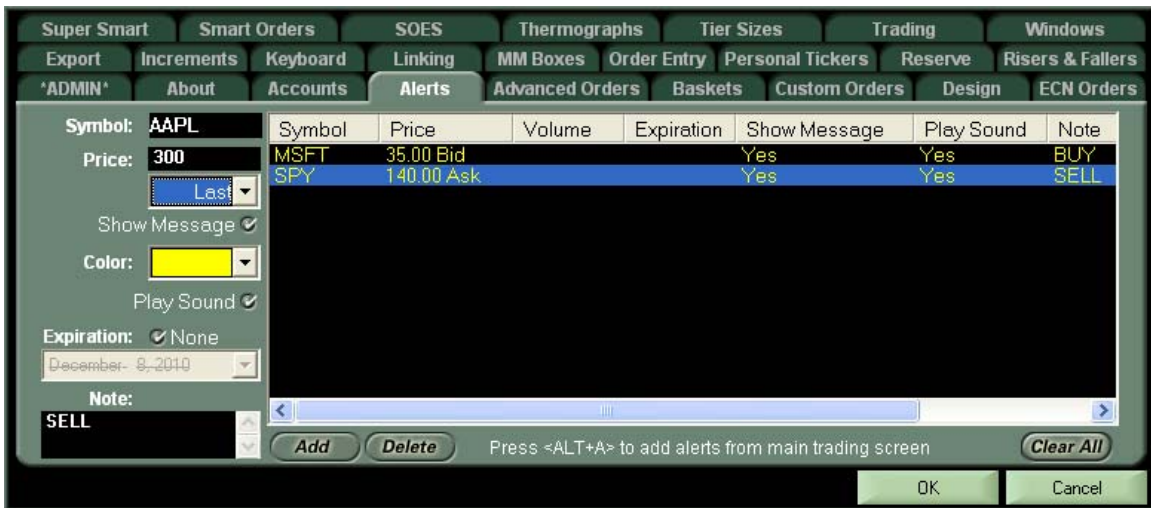


### New Imbalance Columns in Imbalance Window

Regulatory Imbalance (Buy, Sell, Net), Reg Imb as % of Volume, Close Only Clear Price, Cont Book Clear Price, Clear Price, Far Price, Near Price, Reference Price

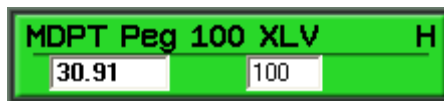
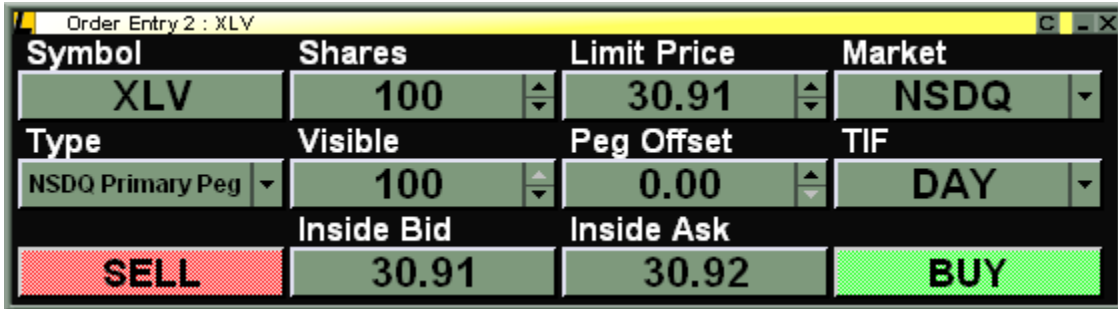
Symbol	Net Reg Imbalance	Reg % of Vol	Reference Price	Reg Buy Imbalance	Reg Sell Imbalance	Close Only Clear P...	Cont Book Clear Pr...	Clear Price	Far Price	Near Price	Net Im
KEY	1,615,900	27%	8.22	364,900	1,980,600	.00	8.05	.00	.00	.00	
C	1,779,600	1%	4.16	8,061,800	6,282,200	4.20	4.17	.00	.00	.00	
RF	2,044,900	21%	6.34	256,100	2,300,900	.00	6.14	.00	.00	.00	

Set Alert by Last, Bid, Ask Choices; Toggle Choices in Add Alert Pop Up with up/down arrow



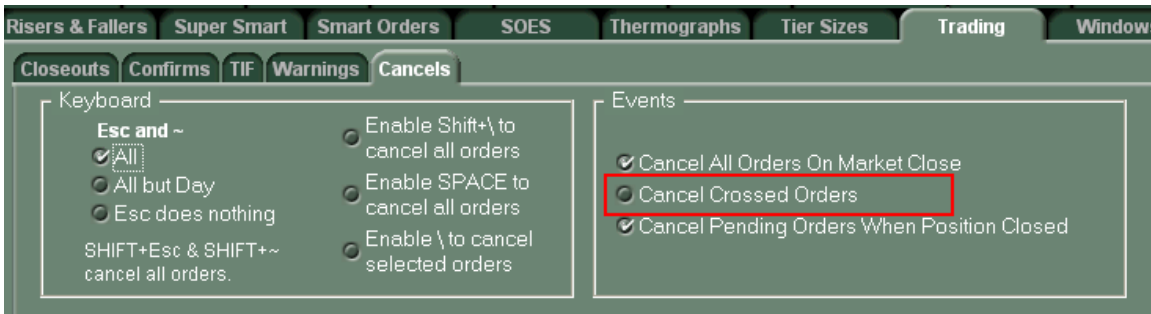
**NSDQ Primary Peg and Midpoint Peg Orders now available in Order Entry Window and Keyboard Tab (enhanced keys)**

Ask your Relationship Manager for Permission to Nasdaq Pegged Orders



**Option to Cancel Crossed Order**

Cancels open order you are about to cross instead of rejecting new order with message “Cannot Cross Own Bid/Offer.”



**New Columns Available: Net Open P&L, Net Closed P&L, Net Marked P&L, % Change from Cost Basis**

Select columns from the Positions Dropdown in the Columns subtab, Net P&L Columns will use calculations set in Design Tab

Position	Symbol	Price	Cost Basis	Net Marked P&L	Net Closed P&L	Net Open P&L	% Change CB
185	POT	141.87	125.57	-529.10	0.00	-529.10	+10.70%
300	GS	161.59	152.703333	+888.00	0.00	+888.00	+7.76%
1	/NQZ0	2,190.00	2,091.00	+30.00	0.00	+30.00	+96.13%
1	!GS/101218C175	.08	1.70	+5.50	0.00	+5.50	-92.08%
-1	!F/101218P17	.62	1.22	-2.00	0.00	-2.00	+47.54%
487	Long			+394.40	0.00	+394.40	
1	Short			-2.00	0.00	-2.00	
488	All			+392.40	0.00	+392.40	

**New Cancel Commands Mappable: Cancel Selected, Cancel Best Bid, Cancel Best Offer, Cancel All Equity Orders, Cancel Selected Order, Cancel for Selected Symbols**

Cancel for Selected Symbols will Cancel All Open Orders for Symbols Selected in any Columned Window (Watchlist, Positions Page, Imbalance Window)

### Mappable Windows Focus to scroll through Various Windows with Keyboard

Change Focus to Orders Window, Positions Window, Watchlist, Imbalance Window, List Order Entry Window. Select the Focus Wnd Key subtab of any window, seen below. Click on the Keyboard key of your choice and click 'Select Key.' The mapped key will display in the center of the window, highlighted below:



### Filter Positions Window by Instrument to Display Equities Options Futures Only; Filter Positions Window to Display Long Only/ Short Only

Right Click in Positions Page. Will not save after log off/on.



### Change Quantity in Pop up Affects Official Tier Size

Each change in the order pop up will change your tier size for that symbol when option is selected, seen below left.

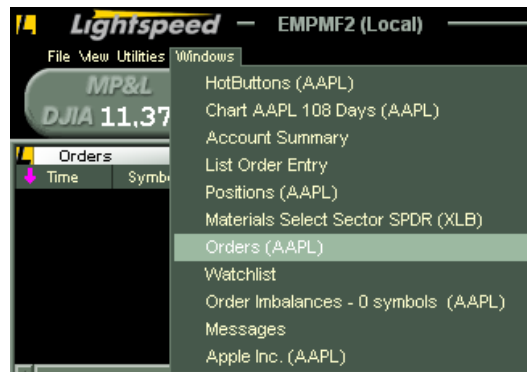


### Keys and Shortcuts to Set Tier to Current Position Size

Map the Tier = Pos Key from the Trading Function Keys or set a Numpad shortcut to Pos, seen above right.

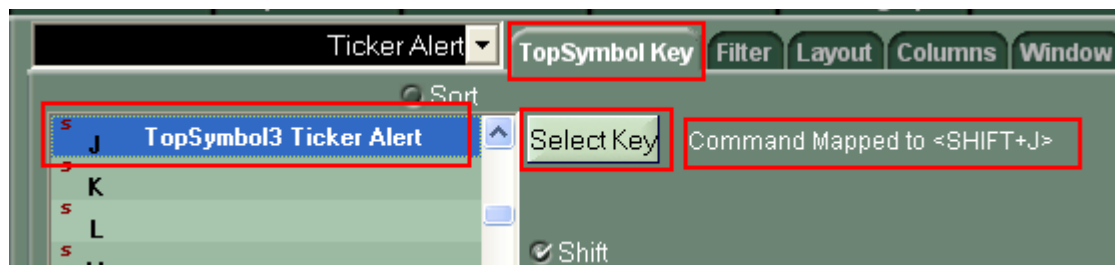
### Windows Menu in top Menu of LS displays open windows

Use this menu to keep track of the windows you currently have open, change focus to selected window



### Mappable Key to Send Last Symbol In Ticker Alert to Level 2

Go to the configuration menu for any Ticker Alert Window and select the Top Symbol Key Tab. Find the keyboard key you want to map to and click 'Select Key.'



### Mappable Commands to scroll through previously typed stocks

Currently this functionality is available by using Shift + Left/Right. Users can now map Previous Symbol and Next Symbol from the Non-Trading Function Keys in the Keyboard Tab.

### Navigate through the Keyboard Tab by depressing any key on your keyboard

Keyboard Tab will go to the selected key. Note: Ctrl, Alt, Shift identifiers not recognized.

### Added function keys to toggle direct ECNs on and off and to Exclude ECN's... ARCA, NSDQ, EDGX, EDGA, BATS, FLOW and OPEN

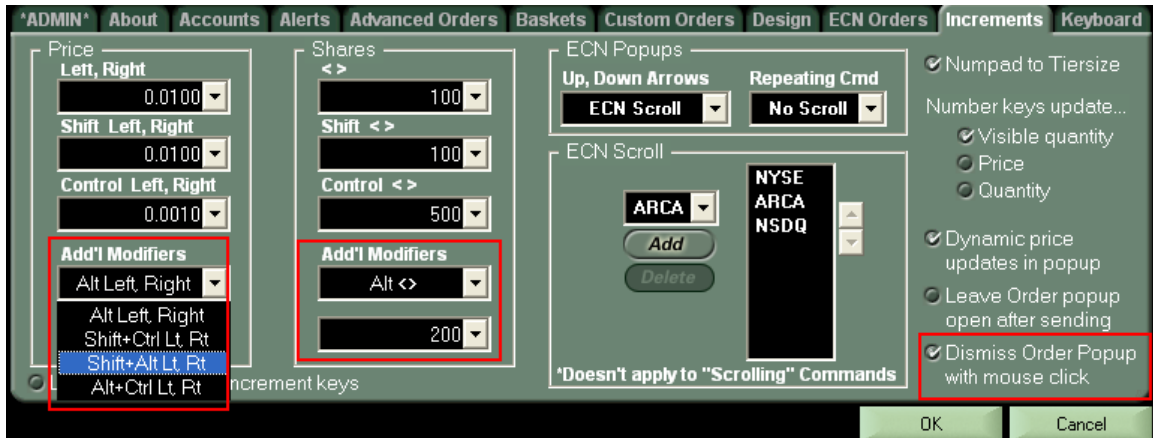
Map these keys to quickly Exclude ECN's from your Level 2 or to quickly un-integrate direct quotes





## Additional Identifiers for Changing Price and Shares in Order Entry Pop Up and List Order Entry Window

Users can hold combinations of Shift, Alt, Ctrl for more ways to modify the Price and Quantity

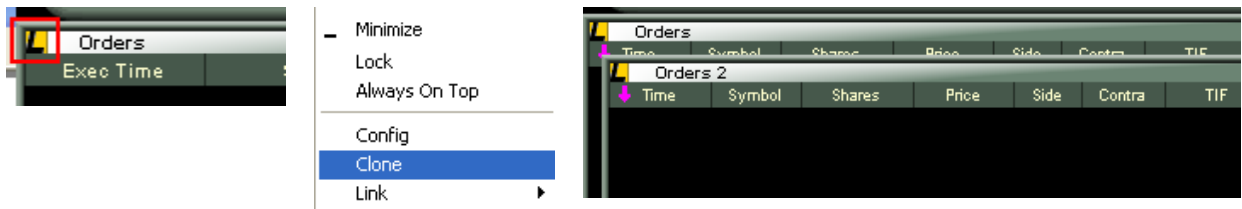


### Option to click anywhere and dismiss Order Entry Pop Up

By selecting this box, above, any mouse click inside Lightspeed Trader will dismiss the open Order Entry Pop Up.

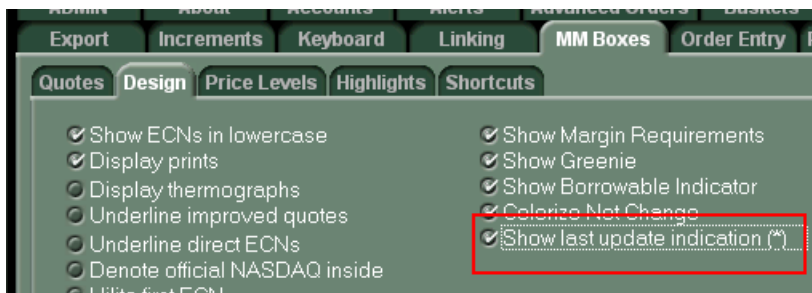
### Clone window option in system menu

Click the Lightspeed Icon in the top left of any window to bring up the System Menu. Select Clone to create a copy of any window.

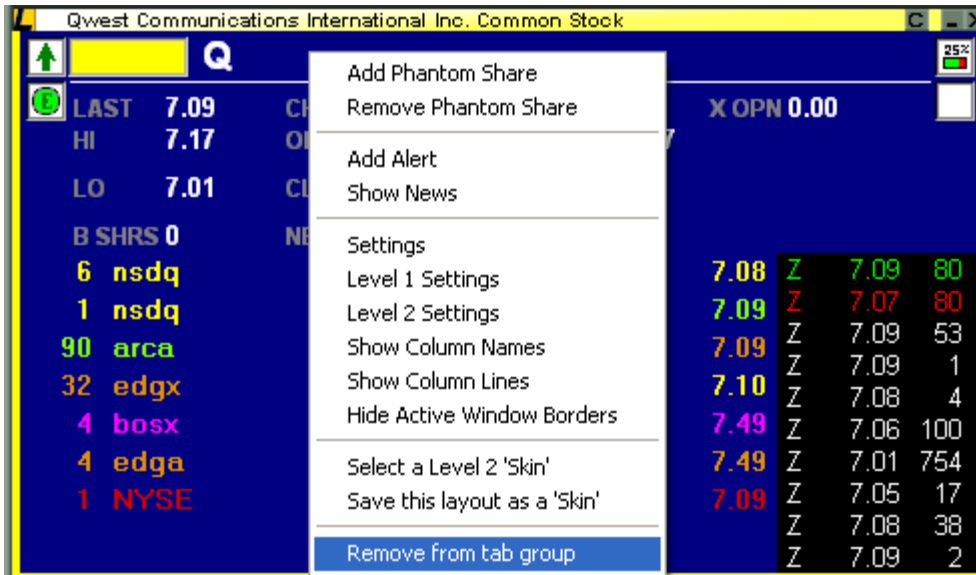


### Option to Hide \* in Level 2 (Indicating Last Update)

MM Boxes Tab, Design Subtab



**Option to Take Level 2 Windows out of Tab Rotation by right clicking and selecting Tab will no longer rotate to this window**



**Option to Colorize Time and Sales History in Level 2 based on Price**

Option in MM Boxes Tab, Design subtab. When selected, print history upon symbol call-up will be colored based on Price. (Green = higher than last, Red = Lower than last, White = Same as Last)





## What are the added features for List Order Entry?

### Keyboard Order Entry for List Order Entry Commands from Pos Window, Watchlist Window, Imbalance Window:

Map LOE commands anywhere on your keyboard and launch after multiselecting in any column window

WARNING: Previously Created LOE Commands are deleted



### Select All, Copy, and Paste Keyboard Commands

Map from Non-Trading Function Keys

