



member FINRA, SIPC

TO: LIGHTSPEED TRADING CUSTOMERS/TRADERS
FROM: OPERATIONS GROUP
SUBJECT: NEW LIGHTSPEED TRADER VERSION 7.0.160
DATE: 4/28/2010

The New Lightspeed Trader Version 7.0.160 is now available for download on the Lightspeed Trading Website.

How do I download the version?

Log into the Lightspeed.com website, select “Downloads” from the left side menu, and then select “Software Downloads”. Select “All Existing Users: Lightspeed Software Upgrade” to begin the download.

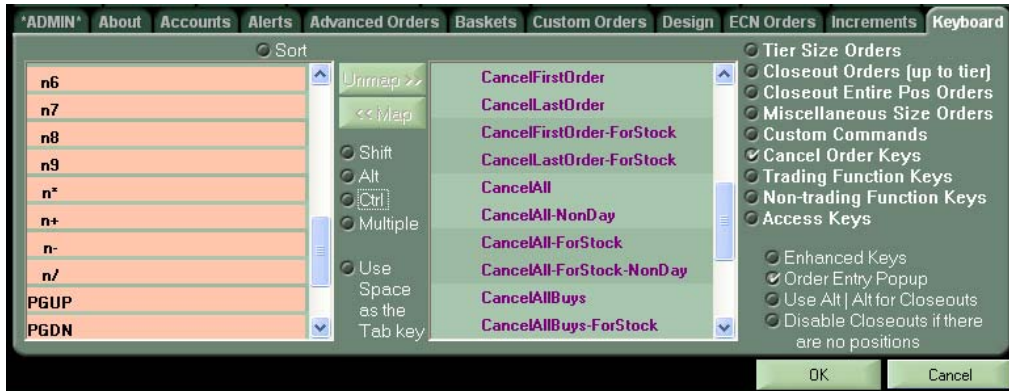
What changes should I look for?

List Order Entry: Ask your RM for permission to the new List Order Entry Functionality.

- Multi-select stocks from your watchlist, positions page, or imbalance window with your mouse, copy and paste them into the List Order Entry Window.
- Copy lists of stocks or orders from a spreadsheet right into a watchlist or a List Order Entry window.
- Create Right Click Commands from the List Order Entry Window, select a # of stocks in your watchlist, positions age or Imbalance Window and trigger commands from your right click menu.

Symbol	Order Price	Order Size	Order Side	Price Updating	Cost Updating
SPY	bid -0.03	100	Buy	119.72	11,972.00
UUP	bid -0.03	100	Buy	23.55	2,355.00
VZ	bid -0.03	100	Buy	30.05	3,005.00
WMT	bid -0.03	100	Buy	54.83	5,483.00
XLB	bid -0.03	100	Buy	34.58	3,458.00
XLK	bid -0.03	100	Buy	23.55	2,355.00
XLV	bid -0.03	100	Buy	31.98	3,198.00
Sum		2,800			184,860.00

New Mappable Keys on the Keyboard Tab: Users can now map the entire Number Pad, Insert, Delete, Home, End, Pg Up, and Pg Dn with or without combinations of CTRL, ALT or Shift.



Note: Remember to turn off Tier Changers if you would like to map keyboard keys to the Number Pad, by unchecking the box “Use Numpad to Change Tier” in the Tier Sizes tab.

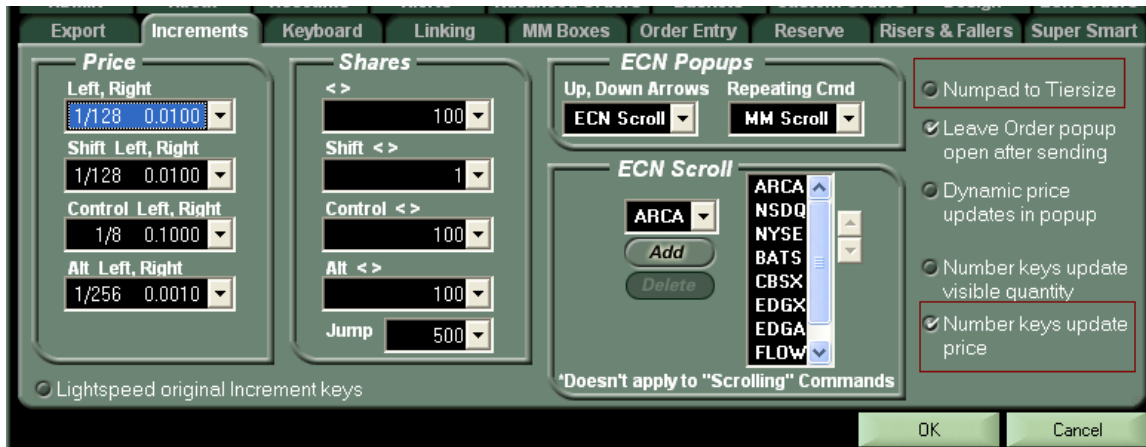
Laptop Page Now with Advanced Functionality: Laptop Page has now been modified to “Laptop Mode.” When users switch to Laptop Mode on a new machine they will be asked if they would like to always consider that machine a “Laptop.” If so, Lightspeed will always open in Laptop Mode on that machine going forward. Lightspeed will not subscribe to any data on other pages when you are in Laptop Mode.



Show Max Marked P&L and Marked P&L Lost (Intraday) in the Account Summary Window: These rows will display your Max Marked P&L on the day and the Marked P&L Lost from your highest Marked P&L on the day, seen below:



Use Number Keys to Update Price in Popup: Set your number keys to update price while your pop up is up by checking “Number Keys Update Price” on the Increments Tab. When checked, users can change the price by manually typing a price using the numbers at the top of the keyboard. If you would also like to use the number pad to the right of your keyboard for this, you must also uncheck “Numpad to Tiersize” on the same Tab. Both are highlighted below:



New Footer for Sum Rows: Click “Show in Footer” on the Position Page Display Tab to view the new Sum Row Display, seen below:

Position	Symbol	Price	Marked P&L	CB Marked P&L	Dollar Value
300	GS	177.84	+345.00	+9,351.00	53,352.00
185	POT	114.21	-331.83	+262.02	21,128.85
2	NQMO	1,992.50	+360.00	+2,170.00	5,600.00
1	!GOP/100417C560	20.28	+1,007.00	+1,065.00	2,028.00
-1	!ESMO	1,192.50	-50.00	-1,612.50	4,500.00
0	C	4.66	+0.05	+0.05	.00
488	Long		+1,380.17	+12,848.02	+82,108.85
1	Short		-50.00	-1,612.50	+4,500.00
489	All		+1,330.22	+11,235.57	+86,608.85

New Hotbuttons, Hotbutton Font Color Chooser: Hotbuttons have a new look and can be further customized with new colors and font colors, seen below:

